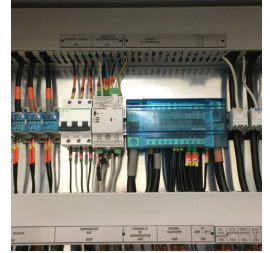
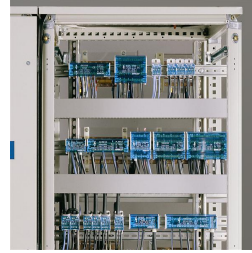
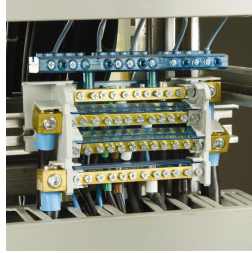
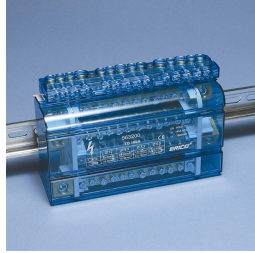
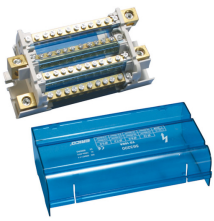
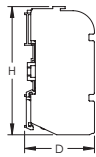
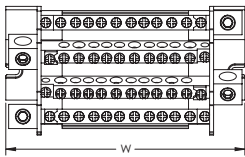


TD Compact Four Pole Distribution Block, 160 A – TD-160A (563200)



- Minimum space for maximum power
- Protection cover and insulating screens are transparent
- Insulating screen between each row
- Easy and safe connections
- Easily clips onto DIN rail or mounts to panel with screws
- Solid bars provide reliability
- Input separated from outputs
- Neutral bar available
- Wiring with or without terminal
- Halogen free
- RoHS compliant



Part Number	TD-160A
Article Number	563200
Material	Thermoplastic Brass
Max Current Rating, IEC	160 A
Short Term Withstand Current (I _{cw}) 1s	8.2 kA
Peak Short Circuit Current (I _{pk})	35 kA
Max Working Voltage, IEC (U _i)	690 V
Line Side Number of Connections	1
Line Side Compact Stranded Wire Size	10 – 50 mm ²
Line Side Stranded Wire Size - Ferrule	10 – 50 mm ²
Load Side Number of Connections	11
Load Side Compact Stranded Wire Size	(1) 2,5 – 6 mm ² (7) 2,5 – 16 mm ² (3) 10 – 35 mm ²
Load Side Stranded Wire Size - Ferrule	(1) 1,5 – 6 mm ² (7) 1,5 – 16 mm ² (3) 10 – 25 mm ²
Depth (D)	50 mm
Height (H)	90 mm
Width (W)	175 mm



Part Number	TD-160A
Unit Weight	0.606 kg
Flammability Rating	UL® 94V-0
Complies With	IEC® 60947-7-1
Certifications	EAC 0234267 (Russian Federation) RoHS
Standard Packaging Quantity	1 pc
UPC	78285644322
EAN-13	3479775632001

Design Guideline for Distribution Blocks, Power Blocks and Power Terminals										
Derating according to Ambient* Temperature (°C) to maintain working temperature of 85°C										
Ambient Temperature (°C)	30°	35°	40°	45°	50°	55°	60°	65°	70°	75°
Derating Coefficient (d)	1	1	1	0.94	0.88	0.82	0.75	0.67	0.58	0.47
*environment around the terminal blocks inside the enclosure										

Line side and load side number of connections are per pole.

IEC is a registered trademark of the International Electrotechnical Commission. UL, UR, cUL, cUR, cULus and cURus are registered certification marks of UL LLC.

WARNING

ERICO products shall be installed and used only as indicated in ERICO's product instruction sheets and training materials. Instruction sheets are available at www.erico.com and from your ERICO customer service representative. Improper installation, misuse, misapplication or other failure to completely follow ERICO's instructions and warnings may cause product malfunction, property damage, serious bodily injury and death.

Copyright © 2015 ERICO International Corporation. All rights reserved.

CADDY, CADWELD, CRITEC, ERICO, ERIFLEX, ERITECH, and LENTON are registered trademarks of ERICO International Corporation.

