



**Global Jointing Systems**  
A DIVISION OF GLOBAL RESINS

Global Resins was established in 1995, specialising in the formulation and manufacture of epoxy and polyurethane resin systems. From the point of inception, quality was always going to be the key issue and recognised as an essential requirement for success. To that end, a quality system was put into place very quickly and ISO 9002 was attained. The system was reviewed during 2003 to take into consideration forthcoming changes and the company met the requirements for ISO9001-2000.

Despite the company's relative youth, its foundations are firmly built on the experience of key personnel, who between them can boast more than 75 years in the industrial resin business. Supplying two part polyurethane and epoxy resin systems to the cable joint market place has become an increasingly important business area for Global Resins.

It quickly became apparent that most companies involved in this market were in fact only kitting the products and not true manufacturers. It was with this in mind that Global decided to put its wealth of experience into setting up a new division - GLOBAL JOINTING SYSTEMS - and manufacturing low / medium / high voltage cable jointing systems.

### THE NEW CONCEPT IN RESIN FILLED JOINTING

Introducing the new concept in Resin Filled Cable Joint Kits.

Tested and approved to BS7888 - HD623, each kit consists of:-

- A shock and chemical resistant mould incorporating our innovative patented clip design (this allows the joint to be easily re-entered if used in conjunction with our Gel Encapsulant)
- Our unique patented insulated connector block, which covers the cable sizes that can be used within each mould for all four core cables from 1mm<sup>2</sup> up to 120mm<sup>2</sup> (for larger sizes standard connectors are available at present whilst the development of the larger fully insulated connectors is completed)
- All kits can be supplied with earthing connection conforming to the requirements of BS7888 if required.

The mould is constructed from Durolon the new polycarbonate material which results in a crystal clear uv resistant moulding. The material offers a very high impact strength - even at low temperatures - and is flame retardent. It is impervious to most everyday chemicals including hydrocarbons and its transparent finish allows the connections to be viewed at any time, unless filled with a two part resin system. All the moulds up to and including 4cx240mm<sup>2</sup> are injection moulded, with the larger moulds being vacuum formed. Both methods utilise the same material thus allowing for any special designs to be made from a proven material.

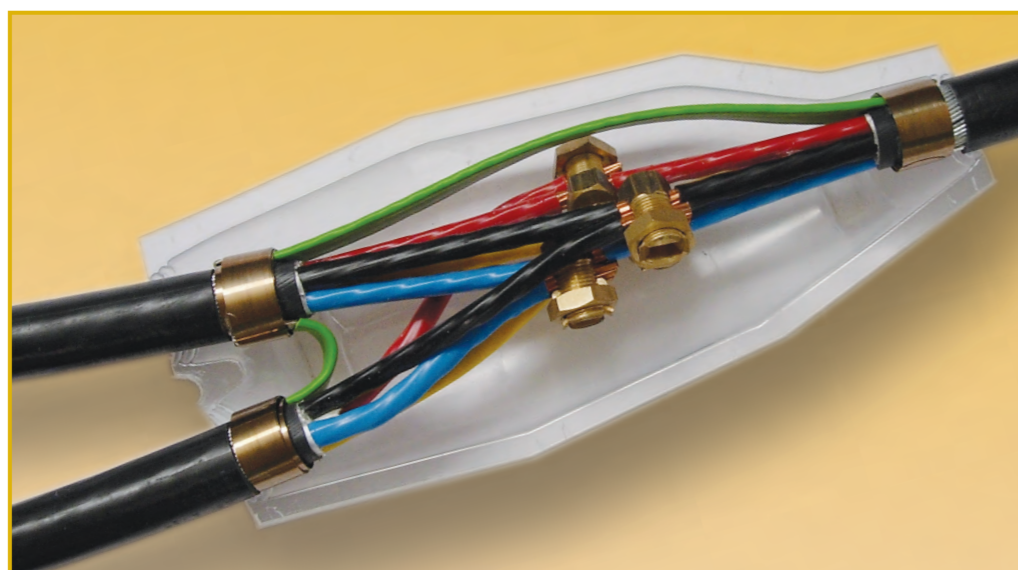
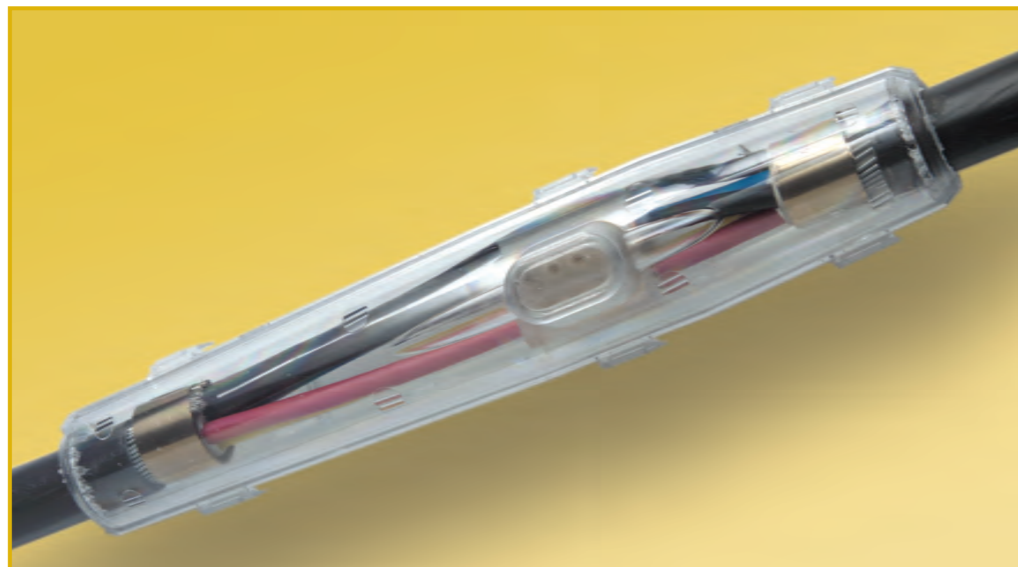
Joints are available for Straight, Mains Branch and Service Branch, accepting either paper or polymeric cables.

Other kits for control cables, multicore telephone cables are also available.

INDEX OF PRODUCTS	PAGE
RESIN FILLED JOINTS	1-3
POLYURETHANE RESIN SYSTEM	4-5
ACCESSORIES	6-7
MEDIUM/HIGH VOLTAGE TAPES	8
HEATSHRINK TERMINATIONS	9-11

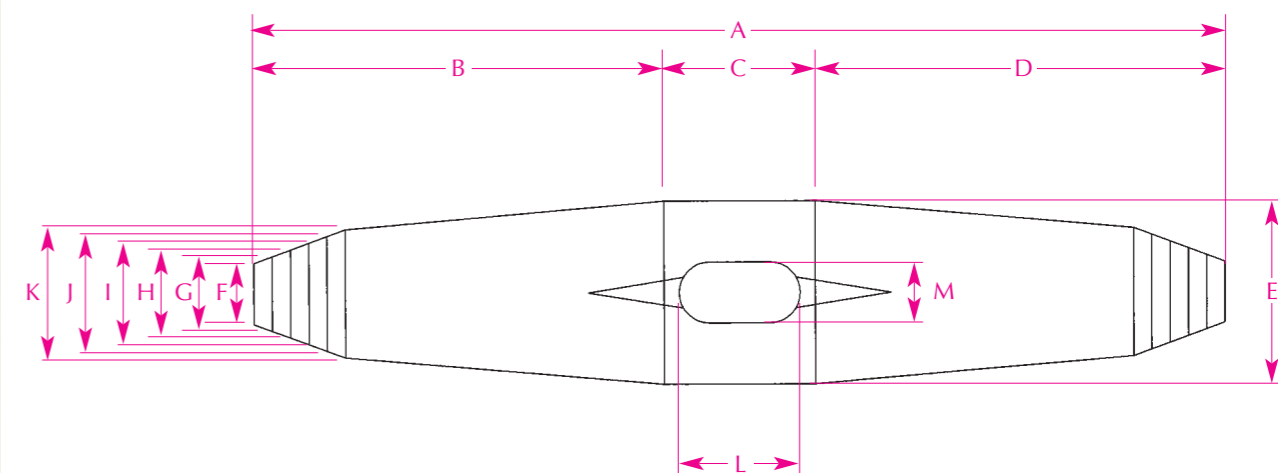
# RESIN FILLED JOINTS

## GLOBAL JOINTING SYSTEMS - THE NEW CONCEPT IN RESIN FILLED JOINTING



- AVAILABLE IN STRAIGHT AND BRANCH FORMATS
- SUITABLE FOR VOLTAGES UP TO 3.6kV
- EASY TO INSTALL, CLICK TOGETHER MOULDS
- FULLY INSULATED MECHANICAL CONNECTORS UP TO 120mm<sup>2</sup>
- OTHER MECHANICAL CONNECTORS UP TO 400mm<sup>2</sup>
- COMPLETE RANGE OF JOINTS FROM 0.75mm - 400mm<sup>2</sup>
- SUITABLE FOR SINGLE AND MULTICORE POLYMERIC AND PAPER CABLES BOTH STRANDED AND SOLID COPPER/ALUMINIUM CONDUCTORS
- PERFORMANCE TESTED TO BS7888/HD623 - FULL TEST REPORT AVAILABLE ON REQUEST

## STRAIGHT JOINTS



### KEY FOR JOINT DIMENSIONS

ALL DIMENSIONS ARE INTERNAL.  
ALL MEASUREMENTS IN MILLIMETRES.

Joint	Resin Packs used	A	B	C	D	E	F	G	H	I	J	K	L	M
S4	RP0 (1 pack)	160	67.5	25	67.5	30	10	12	14	16	19	21	20	10
S10	RP1 (1 pack)	210	100	50	60	38	10	14	18	22	26	30	30	15
S16	RP2 (1 pack)	225	83	45	96	48	10	16	20	25	29	33	30	15
S25	RP3 (1 pack)	310	101	49	160	52	17	21	25	30	31	38	30	15
S50	RP4 (1 pack)	370	110	60	200	66	20	23	26	30	33	36	40	20
S120	RP5 (1 pack)	600	154	86	360	79	30	35	38	42	46	49	40	20
S240	RP6/RP4 (2/1 packs)	780	225	120	435	125	48	50	58	65	71	79	40	30
S400	RP6 (6 packs)	1240	255	300	685	157	55	67	79	91	91	103	60	40

### KIT SELECTION CHART FOR LV STRAIGHT JOINTS - ARMoured CABLES

Cable Size (mm)	1.5	2.5	4	6	10	16	25	35	50	70	95	120	150	185	240	300	400
Kit Number																	
S4	■	■	■														
S10	■	■	■	■													
S16		■	■	■	■												
S25			■	■	■	■											
S50				■	■	■	■										
S120					■	■	■	■	■								
S240						■	■	■	■	■	■						
S400							■	■	■	■	■	■	■	■	■	■	■

### KIT SELECTION CHART FOR LV STRAIGHT JOINTS - UNARMoured CABLES

Cable Size (mm)	1.5	2.5	4	6	10	16	25	35	50	70	95	120	150	185	240	300	400
Kit Number																	
S4	■	■	■														
S10	■	■	■	■													
S16		■	■	■	■												
S25			■	■	■	■											
S50				■	■	■	■										
S120					■	■	■	■	■								
S240						■	■	■	■	■	■	■					
S400							■	■	■	■	■	■	■	■	■	■	■

### KIT SELECTION CHART FOR LV CONTROL CABLES

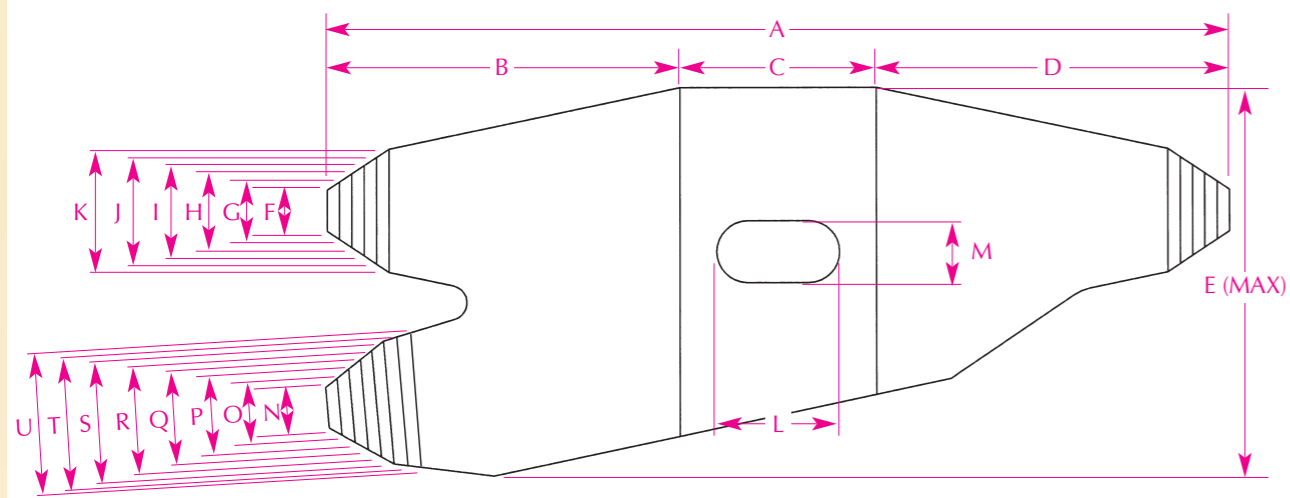
Kit Number	Cable Size	2 core	4 core	5 core	7 core	8 core	10 core	11 core	16 core	27 core	30 core	48 core
SCC4	1.5mm	■	■									
	2.5mm	■	■	■								
SCC8	1.5mm	■	■	■	■							
	2.5mm	■	■	■	■	■						
SCC16	1.5mm		■	■	■	■	■					
	2.5mm		■	■	■	■	■	■				
SCC24	1.5mm			■	■	■	■	■	■			
	2.5mm			■	■	■	■	■	■	■		

### KIT SELECTION CHART FOR MULTIPAIR TELEPHONE CABLES

Kit Number	Cable Size	2pair	5pair	10pair	15pair	25pair	40pair	50pair	100pair
ST5	0.9mm	■	■						
ST15	0.9mm		■	■	■				
ST25	0.9mm			■	■	■			
ST50	0.9mm				■	■	■		
S100	0.9mm					■	■	■	■

Note: Overlap in cable sizes allows for unarmoured cables. All Dimensions are internal of the finished products.

# BRANCH JOINTS



**KEY FOR JOINT DIMENSIONS** ALL DIMENSIONS ARE INTERNAL. ALL MEASUREMENTS IN MILLIMETRES.

Joint	Resin Packs used	A	B	C	D	E	F	G	H	I	J	K	L	M	N	O	P	Q	R	S	T	U
B4	RP1 (1 pack)	190	79	34	79	62	5	8	11	14	18	21	20	10	5	8	11	14	18	21		
B10	RP3 (1 pack)	220	86	48	86	95	10	14	18	22	26	30	30	15	10	14	18	22	26	30		
B25	RP4 (1 pack)	270	105	60	105	112	17	21	25	30	33	38	30	15	17	21	25	30	33	38		
B50	RP5 (1 pack)	340	120	100	120	120	20	23	26	30	33	36	35	17	20	23	26	32	36	40		
B120	RP6 (1 pack)	400	150	100	150	140	30	35	40	42	48	50	40	20	20	23	27	30	33	36	38	40
B240	RP6 (2 packs)	500	189	125	186	179	50	58	65	71	79	48	40	30	20	23	27	30	33	36	38	40
B400	RP6 (4 packs)	650	245	162	243	213	55	67	79	91	103	115	60	32	20	23	27	30	33	36	38	40

## KIT SELECTION CHART FOR LV BRANCH JOINTS - ARMoured CABLES

Cable Size (mm)	1.5	2.5	4	6	10	16	25	35	50	70	95	120	150	185	240	300	400
<b>Kit Number</b>																	
SB4 Main Cable																	
SB4 Branch Cable																	
SB10 Main Cable																	
SB10 Branch Cable																	
SB25 Main Cable																	
SB25 Branch Cable																	
SB50 Main Cable																	
SB50 Branch Cable																	
SB120 Main Cable																	
SB120 Branch Cable																	
SB240 Main Cable																	
SB240 Branch Cable																	
SB400 Main Cable																	
SB400 Branch Cable																	

## KIT SELECTION CHART FOR LV BRANCH JOINTS - UNARMoured CABLES

Cable Size (mm)	1.5	2.5	4	6	10	16	25	35	50	70	95	120	150	185	240	300	400
<b>Kit Number</b>																	
SB4 Main Cable																	
SB4 Branch Cable																	
SB10 Main Cable																	
SB10 Branch Cable																	
SB25 Main Cable																	
SB25 Branch Cable																	
SB50 Main Cable																	
SB50 Branch Cable																	
SB120 Main Cable																	
SB120 Branch Cable																	
SB240 Main Cable																	
SB240 Branch Cable																	
SB400 Main Cable																	
SB400 Branch Cable																	

## MAINS BRANCH JOINT SELECTION CHART

Cable Size	25mm	35mm	50mm	70mm	95mm	120mm	150mm	185mm	240mm	300mm	400mm
<b>Kit Number</b>											
MB50 Main Cable											
MB50 Branch Cable											
MB120 Main Cable											
MB120 Branch Cable											
MB240 Main Cable											
MB240 Branch Cable											
MB400 Main Cable											
MB400 Branch Cable											

# POLYURETHANE RESIN SYSTEM



The PU238 resin system has been specifically developed for the encapsulation of electronics, light electrical applications and cable joints. The system is available in a number of formats for delivery but the acclaimed twinpack system is the preferred method of supply for the cable joint kit. The resin and supply method offers the following benefits for the specifier and end user: -

- NO WASTAGE, EACH CABLE JOINT KIT COMES WITH A PRE-DETERMINED PACK SIZE OR COMBINATION OF PACKS TO SUIT THE SIZE OF CABLE JOINT INSTALLATION BEING UNDERTAKEN.
- NO MESS EASY TO USE 'MIX IN THE BAG' SYSTEM.
- PRE-FILLED PACKS ENSURE THE CORRECT MIX RATIO EACH TIME.
- TWINPACK SYSTEM REMOVES THE OPERATOR FROM THE RAW MATERIALS DURING THE MIXING PROCESS HELPING FROM THE HEALTH AND SAFETY POINT OF VIEW.
- RESIN SYSTEM TESTED TO BS7888 HD623.
- 3 YEAR GUARANTEED SHELF LIFE.

## CHARACTERISTICS OF MIXED SYSTEM

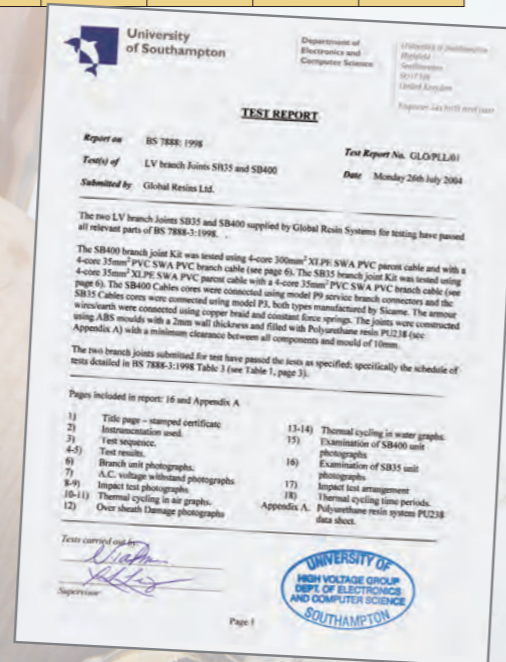
COLOUR OF MIXED SYSTEM	Beige
DENSITY OF RESIN	1.47
DENSITY OF HARDENER	1.24
DENSITY OF MIXED SYSTEM	1.43
VISCOSITY OF RESIN	4800 - 5000cps spindle 6 @ 25°C
VISCOSITY OF HARDENER	180 - 240cps spindle 6 @ 25°C
VISCOSITY OF MIXED SYSTEM	3000 - 3300cps spindle 6 @25°C
POT LIFE	15 - 20 minutes 0.5 litre @ 25°C
GEL TIME	20 - 25 minutes 0.5 litre @ 25°C*
FULL CURE	48 hours @ 25°C
PEAK EXOTHERM	60 - 65°C (150g mass)
SHORE D HARDNESS AFTER 24 HOURS AT ROOM TEMPERATURE	A: 60 B: 55
* Gel time is very much dependent upon ambient temperature and mixing time.	

## PHYSICAL CHARACTERISTICS

TEAR STRENGTH	10 N/mm <sup>2</sup>
TENSILE STRENGTH	12 N/mm <sup>2</sup>
ULTIMATE ELONGATION	3%
VOLUME RESISTIVITY	10 <sup>10</sup> Ohms mm
SURFACE RESISTIVITY	10 <sup>10</sup> Ohms mm
THERMAL CONDUCTIVITY	0.9W/(m°C)
MAXIMUM CONTINUOUS OPERATING TEMPERATURE	80°C
DIELECTRIC STRENGTH	10KV/mm
WATER ABSORPTION RATE	10mg @ 25°C, 24 hours 1000mg @ 50°C, 42 days
ADHESIVE STRENGTH TO PVC	4 N/mm <sup>2</sup>
ADHESIVE STRENGTH TO XLPE	2 N/mm <sup>2</sup>
ADHESIVE STRENGTH TO LEAD	10 N/mm <sup>2</sup>
ADHESIVE STRENGTH TO ALUMINIUM	11 N/mm <sup>2</sup>
ADHESIVE STRENGTH TO COPPER	11 N/mm <sup>2</sup>

## RESIN PACK SIZES, WEIGHTS AND VOLUMES

Joining Twinpacks	RP0	RP1	RP2	RP3	RP4	RP5	RP6
Pack Size (grammes)	120	310	415	850	1570	3060	4290
Pack Size (litres)	0.075	0.175	0.3	0.55	1	2	3



## INSULATED STRAIGHT CONNECTORS

Machined brass inserts, with torque controlled screws, insulated in polypropylene. Suitable for all cables from 1.5 - 120mm<sup>2</sup>, both copper and aluminium.

CATALOGUE NUMBER	CABLE RANGE	DIMENSIONS
GSC1	0.75-10mm <sup>2</sup>	31x31x20mm
GSC2	4-25mm <sup>2</sup>	35x35x34mm
GSC3	16-50mm <sup>2</sup>	64x64x40mm
GSC4	35-120mm <sup>2</sup>	78x78x65mm
PATENT NUMBER 0423980.2		



## MECHANICAL IN LINE CONNECTORS

Shear Head connectors, designed to replace compression ferrules, suitable for both copper and aluminium cables from 95 - 400mm<sup>2</sup>.

CATALOGUE NUMBER	CABLE RANGE	DIMENSIONS
GSC2/1	50-95mm <sup>2</sup>	80x25x25mm
GSC2/2	95-185mm <sup>2</sup>	100x34x32mm
GSC2/3	185-300mm <sup>2</sup>	120x40x41mm
ALL HAVE SHEAR BOLT HEADS		



## BRANCH CONNECTORS

Complete range of connectors suitable for both Mains and Service connections from 6-400mm<sup>2</sup> Main cables and 6-35mm<sup>2</sup> Service Branch cables.

CATALOGUE NUMBER	CABLE RANGE - MAIN	CABLE RANGE - BRANCH	DIMENSIONS
GSB1	4-50mm <sup>2</sup>	4-50mm <sup>2</sup>	20x23x25mm
GSB2	70-95mm <sup>2</sup>	4-35mm <sup>2</sup>	20x25x26mm
GSB3	120-150mm <sup>2</sup>	4-35mm <sup>2</sup>	20x26x32mm
GSB4	185mm <sup>2</sup>	4-35mm <sup>2</sup>	20x26x32mm
GSB5	240mm <sup>2</sup>	4-35mm <sup>2</sup>	20x30x35mm
GSB6	300mm <sup>2</sup>	4-35mm <sup>2</sup>	20x30x35mm



## CONSTANT FORCE SPRINGS

Manufactured from phosphor bronze coated high tensile stainless steel. The range covers from 5mm - 120mm diameters.

CATALOGUE NUMBER	CABLE RANGE	WIDTH
CFS1	4-10mm <sup>2</sup>	6.35mm
CFS2	10-15mm <sup>2</sup>	9.50mm
CFS3	14-22mm <sup>2</sup>	16mm
CFS4*	16-25mm <sup>2</sup>	19mm
CFS5	18-29mm <sup>2</sup>	16mm
CFS6	23-37mm <sup>2</sup>	16mm
CFS7	31-50mm <sup>2</sup>	16mm
CFS8	44-70mm <sup>2</sup>	20mm
CFS9	58-94mm <sup>2</sup>	20mm
CFS10*	60-135mm <sup>2</sup>	19mm

\* CFS4 and CFS10 available to special order.



## TELEPHONE CONNECTORS

Insulation piercing jelly filled connectors for Straight and Branch jointing of multi pair telephone cables.

### 8A CONNECTOR

Does not have extended ports. It is smaller than 8A-1 and is ideal for use where jointing space is limited. Like 8A-1 it can be used on any combination of two conductor sizes.

### 8A-1 CONNECTOR

Can be used on any combination of two conductors. The ports extend beyond the body of the connector so that it is easy to see that the wires are properly inserted before crimping.

### 8B CONNECTOR

A two or three wire connector, which may be used to connect any combination of two or three wires. When only two wires are connected the middle port may be used for test access. The connector has an extended body so that it is easy to see when the wires are correctly inserted beyond the connecting element, and are correctly positioned for crimping.

### 8C-1 CONNECTOR

A half tap connector which may be used to connect any combination of two wires. Maximum insulation diameter is 2.06mm for the tap wire. 8C-1 is easy to use. The new wire is simply inserted and secured by finger crimping before the tapped wire is introduced and the connector is crimped.



# MEDIUM/HIGH VOLTAGE TAPES

PART NUMBER & DESCRIPTION	THICK MM	LENGTH M	WIDTH MM	SPECIFIC APPLICATION	ADDITIONAL INFORMATION
<b>GJT-530</b> Electrical sealing putty. Black.	3.2	1.5	38	Used for waterproofing of taped joints, repair of cable sheaths and reconstitution of the insulation for LV cables. All-purpose thick putty tape.	The interleaving overlaps the edges of the coil, allowing easy separation from the tape. Particularly suitable for hot climates. Good electrical properties.
<b>GJT-523</b> EPR self-amalgamating tape. Black.	0.75	3.0 5.0 9.1 10.0	19 25 38 50	Designed to joint and repair a wide range of solid dielectric power cables up to 69kV. Used for the insulation, waterproofing and protection of electrical components.	Excellent physical and electrical properties, with a high degree of stability. Excellent water and ozone resistance. High insulation resistance. High dielectric strength. Low electrical losses.
<b>GJT-565</b> Oil-resistant, high permittivity, stress control tape. Black.	0.75	5.0	25	Used in MV transition joints between paper impregnated cables and polymeric cables with taped, heat shrinkable or cold shrink techniques. Used on the conductor or insulation for the control of electric field.	Elimination or reduction of partial discharges. Excellent oil resistance and control of the electrical field. Very high dielectric constant.
<b>GJT-561</b> EPR semi-conducting self-amalgamating tape. Black.	0.75	3.0 5.0	19 25 38 50	Reconstituting of the semi-conducting screens of MV and HV cables. This tape has all the normal benefits associated with self-amalgamating tapes, giving void-free homogeneous wrapping. Used for smoothing electrical stresses.	Excellent physical and electrical properties without the application of heat or pressure. Embossed or smooth interleaving. Good water resistance. Excellent heat ageing characteristics. Approval: EDF HN 26-S-04. Meets standard C 33-011.
<b>GJT-533</b> PVC heavy duty electrical adhesive tape. Black.	0.20	20 33	19	Premium, heavy duty, electrical tape for insulation and harnessing applications. Higher dielectric strength and mechanical resistance than GJT-5602.	Excellent electrical properties as well as tough, flexible and conformable. It has a continuous operating temperature of 90°C. Approvals pending: IMQ, UL and VDE.
<b>GJT-522</b> PVC heavy duty electrical adhesive tape. Black or Silver.	0.25	20 33	19	Premium, heavy duty, electrical tape for insulation and harnessing applications. Higher dielectric strength and mechanical resistance than GJT-5602.	Excellent electrical properties as well as tough, flexible and conformable. It has a continuous operating temperature of 90°C. Approvals pending: IMQ, UL and VDE.
<b>GJT-5602</b> PVC electrical adhesive tape. Range of colours.	0.15	10 20 25 33	15-25	Premium grade electrical tape, which is lead free. Fully approved to all European specifications. Higher dielectric strength and mechanical protection than GJT-5270. Used as colour coding for identification as well as for insulation of electrical wires and cables. Applied on the phases of low voltage cables, on data and telecommunication cables as well as water and gas pipes. Wrapping and colour coding of harnesses. Mechanical protection of the joint.	Excellent electrical properties as well as tough, flexible and conformable. It has a continuous operating temperature of 90°C. Approvals pending: IMQ, UL and VDE.
<b>GJT-5270</b> PVC electrical adhesive tape. Range of colours.	0.13	10 20 25 33	12-25	Premium grade electrical tape, which is lead free. Designed for all primary electrical insulation where a recognised international approval is required and where environmental safety is a concern. Used as colour coding for identification as well as for insulation of electrical wires and cables. Applied on the phases of low voltage cables, on data and telecommunication cables as well as water and gas pipes. Also used for the wrapping and colour coding of harnesses.	Excellent electrical properties as well as tough, flexible and conformable. It has a continuous operating temperature of 90°C. Approvals pending: IMQ, UL and VDE.



## HEATSHRINK TERMINATIONS 7.2 - 33kV

- FULLY TESTED TO INTERNATIONAL STANDARDS
- COMPETITIVE PRICES
- IDENTICAL TO HEATSHRINK SYSTEMS CURRENTLY IN USE, THEREFORE NO JOINTER RETRAINING NECESSARY
- THOUSANDS ALREADY INSTALLED WORLDWIDE
- FULL SUPPORTING ACCESSORY RANGE

SINGLE CORE XLPE 7.2kV TERMINATIONS		
PART NUMBER INDOOR	CABLE RANGE	PART NUMBER OUTDOOR
1TIS-7.2X-A	16-50mm <sup>2</sup>	1TES-7.2X-A
1TIS-7.2X-B	70-185mm <sup>2</sup>	1TES-7.2X-B
1TIS-7.2X-C	240-300mm <sup>2</sup>	1TES-7.2X-C
1TIS-7.2X-D	400-500mm <sup>2</sup>	1TES-7.2X-D
1TIS-7.2X-E	630-1000mm <sup>2</sup>	1TES-7.2X-E

THREE CORE XLPE 7.2kV TERMINATIONS		
PART NUMBER INDOOR	CABLE RANGE	PART NUMBER OUTDOOR
3TIS-7.2X-A	16-25mm <sup>2</sup>	3TES-7.2X-A
3TIS-7.2X-B	35-120mm <sup>2</sup>	3TES-7.2X-B
3TIS-7.2X-C	150-240mm <sup>2</sup>	3TES-7.2X-C
3TIS-7.2X-D	300-500mm <sup>2</sup>	3TES-7.2X-D

SINGLE CORE XLPE 12kV TERMINATIONS		
PART NUMBER INDOOR	CABLE RANGE	PART NUMBER OUTDOOR
1TIS-12X-A	16-35mm <sup>2</sup>	1TES-12X-A
1TIS-12X-B	50-95mm <sup>2</sup>	1TES-12X-B
1TIS-12X-C	120-240mm <sup>2</sup>	1TES-12X-C
1TIS-12X-D	300-500mm <sup>2</sup>	1TES-12X-D
1TIS-12X-E	630-800mm <sup>2</sup>	1TES-12X-E

THREE CORE XLPE 12kV TERMINATIONS		
PART NUMBER INDOOR	CABLE RANGE	PART NUMBER OUTDOOR
3TIS-12X-A	16-25mm <sup>2</sup>	3TES-12X-A
3TIS-12X-B	35-95mm <sup>2</sup>	3TES-12X-B
3TIS-12X-C	120-240mm <sup>2</sup>	3TES-12X-C
3TIS-12X-D	300-500mm <sup>2</sup>	3TES-12X-D

SINGLE CORE XLPE 17.5kV TERMINATIONS		
PART NUMBER INDOOR	CABLE RANGE	PART NUMBER OUTDOOR
1TIS-17.5X-A	25-70mm <sup>2</sup>	1TES-17.5X-A
1TIS-17.5X-B	95-185mm <sup>2</sup>	1TES-17.5X-B
1TIS-17.5X-C	240-400mm <sup>2</sup>	1TES-17.5X-C
1TIS-17.5X-D	500-630mm <sup>2</sup>	1TES-17.5X-D

THREE CORE XLPE 17.5kV TERMINATIONS		
PART NUMBER INDOOR	CABLE RANGE	PART NUMBER OUTDOOR
3TIS-17.5X-A	25-70mm <sup>2</sup>	3TES-17.5X-A
3TIS-17.5X-B	95-185mm <sup>2</sup>	3TES-17.5X-B
3TIS-17.5X-C	240-400mm <sup>2</sup>	3TES-17.5X-C

SINGLE CORE XLPE 24kV TERMINATIONS		
PART NUMBER INDOOR	CABLE RANGE	PART NUMBER OUTDOOR
1TIS-24X-A	25-50mm <sup>2</sup>	1TES-24X-A
1TIS-24X-B	70-95mm <sup>2</sup>	1TES-24X-B
1TIS-24X-C	120-185mm <sup>2</sup>	1TES-24X-C
1TIS-24X-D	240-300mm <sup>2</sup>	1TES-24X-D
1TIS-24X-E	400-630mm <sup>2</sup>	1TES-24X-E

THREE CORE XLPE 24kV TERMINATIONS		
PART NUMBER INDOOR	CABLE RANGE	PART NUMBER OUTDOOR
3TIS-24X-A	25-50mm <sup>2</sup>	3TES-24X-A
3TIS-24X-B	70-95mm <sup>2</sup>	3TES-24X-B
3TIS-24X-C	120-185mm <sup>2</sup>	3TES-24X-C
3TIS-24X-D	240-300mm <sup>2</sup>	3TES-24X-D

SINGLE CORE PILC 12kV TERMINATIONS		
PART NUMBER INDOOR	CABLE RANGE	PART NUMBER OUTDOOR
1TIS-12P-A	50-95mm <sup>2</sup>	1TES-12P-A
1TIS-12P-B	120-240mm <sup>2</sup>	1TES-12P-B
1TIS-12P-C	300-400mm <sup>2</sup>	1TES-12P-C
1TIS-12P-D	500-800mm <sup>2</sup>	1TES-12P-D

THREE CORE PILC 12/17.5kV TERMINATIONS		
PART NUMBER INDOOR	CABLE RANGE	PART NUMBER OUTDOOR
3TIS-12P-A	25-50mm <sup>2</sup>	3TES-12P-A
3TIS-12P-B	70-95mm <sup>2</sup>	3TES-12P-B
3TIS-12P-C	120-185mm <sup>2</sup>	3TES-12P-C
3TIS-12P-D	240-400mm <sup>2</sup>	3TES-12P-D

SINGLE CORE PILC 24kV TERMINATIONS		
PART NUMBER INDOOR	CABLE RANGE	PART NUMBER OUTDOOR
1TIS-24P-A	25-50mm <sup>2</sup>	1TES-24P-A
1TIS-24P-B	70-185mm <sup>2</sup>	1TES-24P-B
1TIS-24P-C	240-300mm <sup>2</sup>	1TES-24P-C
1TIS-24P-D	400-630mm <sup>2</sup>	1TES-24P-D

THREE CORE PILC 24kV TERMINATIONS		
PART NUMBER INDOOR	CABLE RANGE	PART NUMBER OUTDOOR
3TIS-24P-A	25-50mm <sup>2</sup>	3TES-24P-A
3TIS-24P-B	70-95mm <sup>2</sup>	3TES-24P-B
3TIS-24P-C	120-185mm <sup>2</sup>	3TES-24P-C
3TIS-24P-D	240-300mm <sup>2</sup>	3TES-24P-D

SINGLE CORE PILC 36kV TERMINATIONS		
PART NUMBER INDOOR	CABLE RANGE	PART NUMBER OUTDOOR
1TIS-36P-A	50-95mm <sup>2</sup>	1TES-36P-A
1TIS-36P-B	120-185mm <sup>2</sup>	1TES-36P-B
1TIS-36P-C	240-400mm <sup>2</sup>	1TES-36P-C
1TIS-36P-D	500-630mm <sup>2</sup>	1TES-36P-D

THREE CORE XLPE 36kV TERMINATIONS		
PART NUMBER INDOOR	CABLE RANGE	PART NUMBER OUTDOOR
3TIS-36P-A	35-70mm <sup>2</sup>	3TES-36P-A
3TIS-36P-B	95-185mm <sup>2</sup>	3TES-36P-B
3TIS-36P-C	240-400mm <sup>2</sup>	3TES-36P-C

## BUSHING PROTECTION BOOTS 7.2 - 33kV

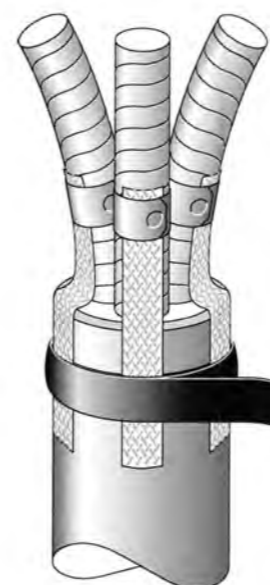
PART NUMBER	CABLE RANGE	VOLTAGE
RABK 1-2	16-300mm <sup>2</sup>	7.2-17.5kV
RABK 3	400-800mm <sup>2</sup>	7.2-17.5kV
RABK 4	50-630mm <sup>2</sup>	33kV

SHORT SKIRT VERSIONS ALSO AVAILABLE, ADD SUFFIX (S)

PART NUMBER	CABLE RANGE	VOLTAGE
RABK 1-2	16-300mm <sup>2</sup>	7.2-17.5kV
RABK 3	400-800mm <sup>2</sup>	7.2-17.5kV

FOR 24 & 33kV APPLICATION CONSULT GLOBAL RESINS

## SOLDERLESS EARTH KITS FOR CU TAPE SCREENS 7.2 - 33kV



CONDUCTOR SIZE	VOLTAGE					KIT NUMBER
	7.2kV	12kV	17.5kV	24kV	36kV	
25-50mm <sup>2</sup>	25-50mm <sup>2</sup>	25-50mm <sup>2</sup>				SPS 204
70-95mm <sup>2</sup>	70-95mm <sup>2</sup>	70-95mm <sup>2</sup>	35-50mm <sup>2</sup>			SPS 205
120-240mm <sup>2</sup>	120-240mm <sup>2</sup>	120-240mm <sup>2</sup>	95-185mm <sup>2</sup>	50-70mm <sup>2</sup>		SPS 206
300-630mm <sup>2</sup>	300-630mm <sup>2</sup>	300-630mm <sup>2</sup>	240-500mm <sup>2</sup>	95-300mm <sup>2</sup>		SPS 207
	800-1000mm <sup>2</sup>	800-1000mm <sup>2</sup>	630-800mm <sup>2</sup>	400-630mm <sup>2</sup>		SPS 208
				800-1000mm <sup>2</sup>		SPS 209

EACH KIT CONTAINS A SET OF THREE

### KEY TO ORDERING

IF 3 CORE SYSTEM REQUIRED - SUFFIX PART NUMBER (3C)  
 IF 1 CORE SYSTEM REQUIRED - SUFFIX PART NUMBER (1C)  
 EG:- 70-95mm<sup>2</sup> KIT FOR THREE CORE 12kV CABLE WOULD BE KIT NUMBER SPS 205(3C)

NOTE:- MOISTURE/SOLDER BLOCK IS INCORPORATED IN EACH BRAID.

FOR CABLE SIZES NOT LISTED, PLEASE CONTACT GLOBAL RESINS.

## ARMOUR EARTH KITS FOR OUTDOOR TERMINATIONS

In installations where an earth gland is not fitted or on outdoor pole mounted installations, armour earthing kits can be supplied for all cable types up to 36kV.

### TYPICAL KIT CONTENTS FOR XLPE

1. ARMOUR SUPPORT RINGS
2. ARMOUR CLAMPS
3. INSULATED COPPER EARTH WIRE
4. MASTIC SEALANT TAPE
5. ADHESIVE LINED HEATSHRINK SEALING TUBE
6. CABLE CLEANING TISSUES
7. INSTALLATION INSTRUCTIONS

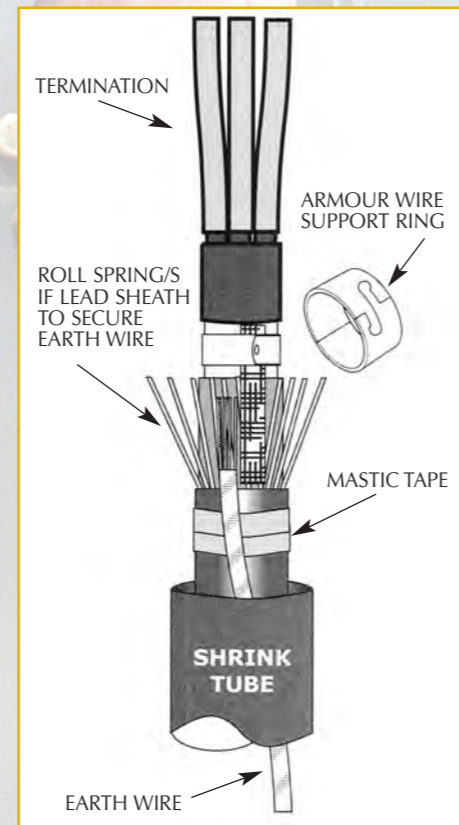
### TYPICAL KIT CONTENTS FOR PAPER INSULATED CABLES

AS ABOVE BUT WITH THE ADDITION OF A COPPER EARTH STRAP AND STAINLESS STEEL ROLL SPRING/S FOR PILC, OR PERFORATED TINNED COPPER STRIP FOR PICAS CABLES.

Reference numbers are obtained by taking the termination part number and substituting TIS (Termination indoor shrink) or TES (Termination outdoor shrink) with OAE (outdoor armour earthing).

#### EXAMPLES

1. If the cable is 3 core 12kV Pilc 95mm<sup>2</sup> the kits required for indoor installations are as follows:- Termination kit 3TIS-12P-B, Armour Earth kit 3OAE-12P-B. The same Armour Earth kit would be used on outdoor installations.
2. If the cable is single core 36kV Xlpe 400mm<sup>2</sup> the kits required for outdoor installations are as follows:- Termination kit 1TIS-36X-C, Armour Earth kit 1OAE-36X-C. The same Armour Earth kit would be used on indoor installations.



## NEW UNIVERSAL HEATSHRINK 12kV RANGE TAKING JOINT

- SUITS 3 CORE XLPE/PILC/PICAS CABLES OR TRANSITION COMBINATIONS.
- COMPLETE WITH 'TAPERED' RANGE TAKING MECHANICAL CONNECTORS, HIGH IMPACT SHELL AND TWIN PACK POLYURETHANE RESIN.
- DESIGNED TO MEET CENELEC HD 628 S1 AND 629.1 S1
- USER FRIENDLY INSTALLATION PROCEDURES.

Global Jointing Systems now offer from stock, a Universal Heatshrink Joint complete with Mechanical Shearbolt Connectors, High Impact Shell, Twin Pack Polyurethane Resin and full earthing accessories for Xlpe, Pilc and Picas Cable combinations.

The standard joint comes complete with modules that enable all cable types and sizes to be catered for. This is ideal for Distributors who wish to cut down their stock levels and Contractors who cannot be sure of the exact cables they will encounter on site.

**Note:** Due to the modular nature of the joint, if cable type is known, earth modules can be omitted at ordering stage to reduce the initial price, or returned for credit.

PART NUMBER	CONDUCTOR SIZE	CABLE TYPES
SPUJ 12U-35-95-3	35-95mm <sup>2</sup>	XLPE / PILC / PICAS
SPUJ 12U-95-185-3	95-185mm <sup>2</sup>	XLPE / PILC / PICAS
SPUJ 12U-185-240-3	185-240mm <sup>2</sup>	XLPE / PILC / PICAS