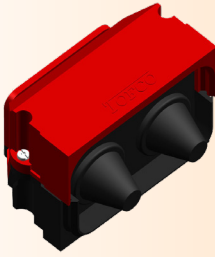


EXTENSION BOXES

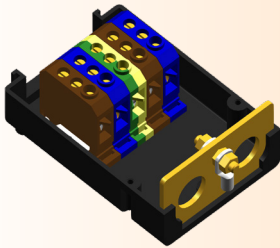
MOULDED FROM FLAME RETARDENT SELF EXTINGUISHING ABS

EXTENSION BOXES TO SUIT FUSED UNIT (F144) AND 3 MODULE ISOLATOR UNIT (DPI)



B1 Extension + ABS Plate
Height 49 x Width 95 x Depth 67mm

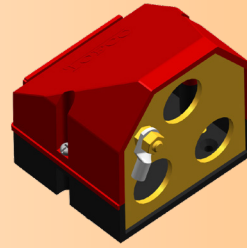
Two and three way extension boxes, accepts up to 5 terminal blocks for up to 25mm² circular conductors. ABS Plate fitted as standard with graduated cone grommets. Brass ferrules with cable clamps or Cable Glands can be supplied / fitted to any extension box. External Brass Plates are also available, please call for details. B21 + B31, 70mm from terminal blocks to cable entry plate. B30, 28mm from terminal blocks to cable entry plate. Other configurations are also available for all extension boxes, please call for more details.



B21 Extension + IP7 Plate + 2 x BW Glands
Height 123 x Width 88 x Depth 58mm



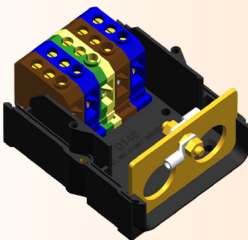
B30 Extension + IP8 Plate
Height 75 x Width 88 x Depth 95mm



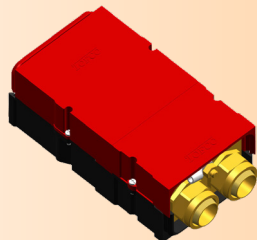
B31 Extension + IP8 Plate + 3 x Ferrules
Height 123 x Width 88 x Depth 95mm

EXTENSION BOXES TO SUIT 4 MODULE ISOLATOR UNIT (FMI)

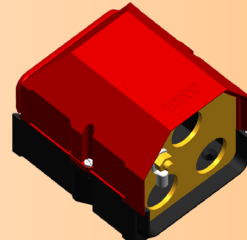
Two and three way extension boxes, accepts up to 5 terminal blocks for up to 25mm² circular conductors. ABS Plate fitted as standard with graduated cone grommets. Brass ferrules with cable clamps or Cable Glands can be supplied / fitted to any extension box. External Brass Plates and other configurations are also available for all extension boxes, please call for more details.



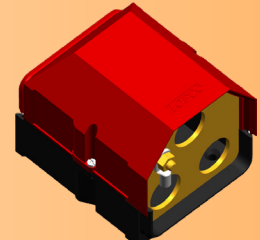
B2 Extension + IP7 Plate
Height 105 x Width 90 x Depth 67mm



B22 Extension + IP7 Plate + 2 x BW Glands
Height 165 x Width 90 x Depth 67mm



B3 Extension + IP8 Plate
Height 105 x Width 90 x Depth 93mm



B33 Extension + IP8 Plate + 3 x Ferrules
Height 165 x Width 90 x Depth 93mm

Other configurations are also available for all Extension Boxes, please call us on **01661 860001** or email us at info@tofco.co.uk for more details.



**HEA / HEMSA Manufacturer
of The Year 2018**

TOFCO CPP LIMITED. MEADOWFIELD IND. EST. PONTELAND, NORTHUMBERLAND, NE20 9SD
Office Tel: **01661 860001** Email: info@tofco.co.uk Website: www.tofco.co.uk
REGISTERED IN ENGLAND 5893596