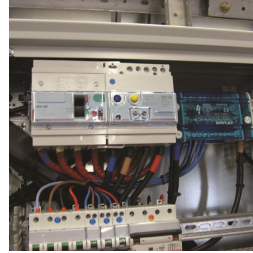
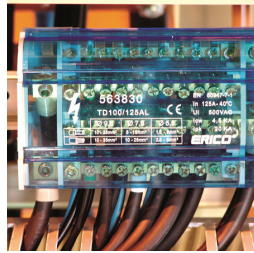
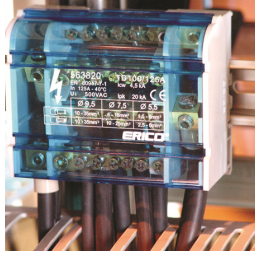
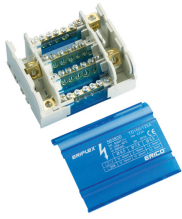
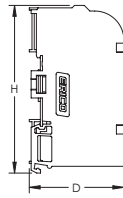
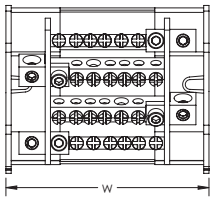


# TD Compact Four Pole Distribution Block, 100/125 A



- Minimum space for maximum power
- Protection cover and insulating screens are transparent
- Insulating screen between each row
- Easy and safe connections
- Easily clips onto DIN rail or mounts to panel with screws
- Solid bars provide reliability
- Input separated from outputs
- Strong mechanical assembly
- Neutral bar available
- RoHS compliant
- Conforms to EN 45545 obtaining an HL3 classification for chapter R23 and HL2 classification for chapter R22
- Halogen free



Material: Thermoplastic, Brass

Part Number	TD-100-125A	TD-100-125AL	TD-100-125ALL
Article Number	563820	563830	563840
Max Current Rating, IEC	125 A		
Short Term Withstand Current (I <sub>cw</sub> ) 1s	4.5 kA		
Peak Short Circuit Current (I <sub>pk</sub> )	30 kA		21 kA
Max Working Voltage, IEC (U <sub>i</sub> )	690 V		
Line Side Number of Connections	1		
Line Side Compact Stranded Wire Size	10 - 35 mm <sup>2</sup>		
Line Side Stranded Wire Size - Ferrule	10 - 35 mm <sup>2</sup>		
Load Side Number of Connections	6	10	14
Load Side Compact Stranded Wire Size	(5) 2,5 - 6 mm <sup>2</sup> (1) 10 - 25 mm <sup>2</sup>	(7) 2,5 - 6 mm <sup>2</sup> (3) 10 - 25 mm <sup>2</sup>	(11) 2,5 - 6 mm <sup>2</sup> (1) 10 - 25 mm <sup>2</sup> (2) 10 - 35 mm <sup>2</sup>
Load Side Stranded Wire Size - Ferrule	(5) 1,5 - 6 mm <sup>2</sup> (1) 6 - 16 mm <sup>2</sup>	(7) 1,5 - 6 mm <sup>2</sup> (3) 6 - 16 mm <sup>2</sup>	(11) 1,5 - 6 mm <sup>2</sup> (1) 6 - 16 mm <sup>2</sup> (2) 10 - 25 mm <sup>2</sup>
Depth [D]	50 mm		
Height [H]	90 mm		

Part Number	TD-100-125A	TD-100-125AL	TD-100-125ALL
Width (W)	109 mm	147 mm	182 mm
Unit Weight	0.33 kg	0.44 kg	0.55 kg
Flammability Rating	UL® 94V-0		
Complies With	IEC® 60947-7-1		
Certifications	CE, ERIFLEX TD EAC EN 45545 RoHS		

Design Guideline for Distribution Blocks, Power Blocks and Power Terminals										
Derating according to Ambient* Temperature [°C] to maintain working temperature of 85°C										
Ambient Temperature [°C]	30°	35°	40°	45°	50°	55°	60°	65°	70°	75°
Derating Coefficient (d)	1	1	1	0.94	0.88	0.82	0.75	0.67	0.58	0.47
*environment around the terminal blocks inside the enclosure										

Line side and load side number of connections are per pole.

IEC is a registered trademark of the International Electrotechnical Commission. UL, UR, cUL, cUR, cULus and cURus are registered certification marks of UL LLC.

**WARNING**

nVent products shall be installed and used only as indicated in nVent's product instruction sheets and training materials. Instruction sheets are available at [www.erico.com](http://www.erico.com) and from your nVent customer service representative. Improper installation, misuse, misapplication or other failure to completely follow nVent's instructions and warnings may cause product malfunction, property damage, serious bodily injury and death and/or void your warranty.

© 2021 nVent All rights reserved

nVent, nVent CADDY, nVent ERICO, nVent ERIFLEX and nVent LENTON are owned by nVent or its global affiliates.

All other trademarks are the property of their respective owners. nVent reserves the right to change specifications without prior notice.