

Fix-o-Rail 150

The distribution board, custom designed more than ever

NEW VERSION
Fix
-O-
Rail
150



Innovative

The best values reinvented

The Fix-o-Rail 150 distribution board, a value established during last 25 years, was looked into and tested once more with the specific requirements of installers. The result: a number of practical details that make the difference. Installation can be completed faster and easier thanks to the following features:

- Cable-entry plates at top and bottom side
- Simple cutting of cable-entry plates
- Larger break-out sections in the side and back-wall
- Improved cable handling

Time saving and ease of use maximized

Versatile

Universal

The range of distribution boards exists in different versions, 1 to 4 rows. You can couple them horizontally with each other by means of a coupling set. The applications of Fix-o-Rail 150 are almost endless; it can be installed in new buildings, for renovation or extension of residential, small shops, restaurants and offices...

More efficient than ever

Thought through

Still easy though

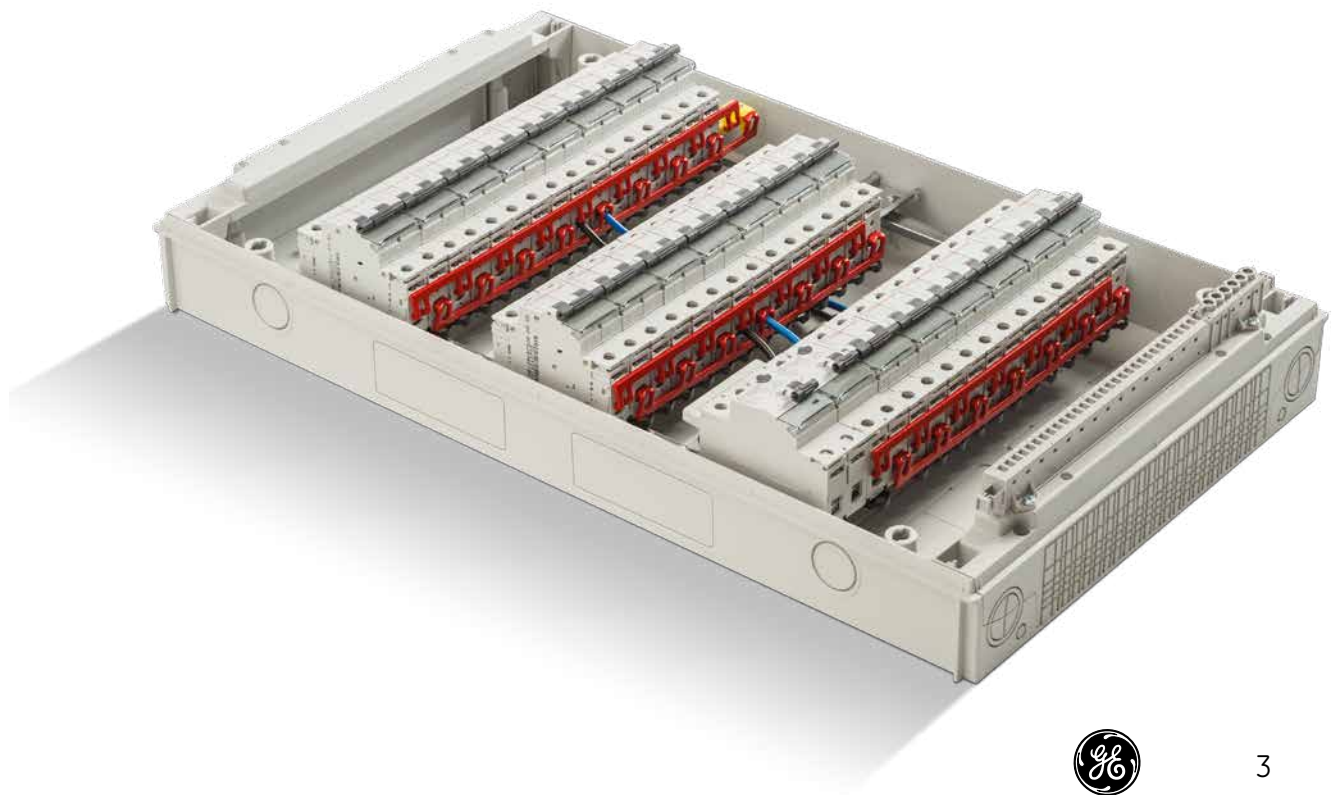
Thanks to a strong rear-panel, the Fix-o-Rail 150 distribution board can even be installed on uneven surfaces. The entire inner space remains for cable management.

Easier to use than ever

Conform

Standards

EN 61439-3
CE and CEBEC marking
Halogen-free



The ideal distribu

Fix-o-Rail

Distribution boards

Cable management

Simple power cable installation.



Rigid frame

30mm of wiring space behind the DIN-rail.



Cable-entry plates

Easy access from bottom and top.
Cable-entry plate completely removable.
Simple cutting of cable-entry plates.



Easy cutting of cable entry plates - quick breaking out.



ation-board:

150

New version

Board coupling

Quick coupling of boards.

Channels

Additional channels allow for easier wiring connections

Fix-O-Rail 150

NEW VERSION
Fix-O-Rail 150

NEW VERSION
Fix-O-Rail 150

Strong back-wall

The strong back-wall ensures a quick installation on uneven walls.

Knock-outs

Quick and easy.

NEW VERSION
Fix-O-Rail 150

Cable-relief (optional) - Screwless earth-rail



Door

The door is available in two versions: transparent or plain. Hinged and locked at three points, 180° door opening angle, the door can be hinged on the left or right side.

The door has a clearly visible hand-grip and can be equipped with a key-lock.

The aesthetics of the door give the whole distribution board a design look.

Document-holder

Integrated document-holder from the backside.



Cover-plate

The distribution board is finished by a solid and stylish cover-plate, manufactured out of a high-grade thermoplastic material, colour RAL9010. Each row allows for the installation of modular devices with a total width of 18 modules. The cover-plate positions itself on the base, it is installed by four captive quarter-turn screws. Self-adhesive labels can be placed on the cover plate for circuit identification.

Screwless earth-bar

Cable-section: 6 x 16mm² and 21 x 4mm².
Delivered with each enclosure.



Wiring space

Large wiring space of 150mm between 2 DIN-rails.
Space for 18 modules per row.
Large wiring space of 30mm between base and mounting-frame, without obstruction - for an easier cable installation.

Cable-entry plate

Removable cable entry plate can be easily installed and secured with fixing screws. Adaptable notched design allows the quick and easy customisation of the cable entry plate.
Cable with cable gland or universal cable entries M25 or M32 can be laid in. They are kept in place with the help of the fixing screws.

Mounting frame

The easy to remove mounting frame is installed in the base. High quality feel to the mounting frame, achieved using an innovative, u-shaped vertical profile with clinched DIN-rails.

Base

The shallow base is manufactured from high-grade thermoplastic material, color RAL9010 (white). Rear and side walls form one rigid, sturdy construction.

Cable-relief

Cables can be fixed to the base with the help of the optional cable-relief bars.

Wall fixation

The oval fixation-points ensure an easy fixation of the distribution board and give the possibility to have a perfectly levelled installation by the central fixation point. Several fixation-points possible (4 to 7), depending on the site conditions.

Knock-outs

Easy to remove knock-outs are positioned in the back-and side-wall - for coupling of bases. Extra channels can be cut-out for additional wiring space between two distribution boards.



Surface mounting



Fix-o-Rail 150

IP40

Packaging includes

- Earth-rail (screwless)⁽¹⁾
- Cable entry-plate
- One blanking plate
- 7 insulating caps
- Circuit identification:
 - adhesive labels
 - adhesive pictograms
- Installation guide

- Total safety
- Complete
- Time saving
- Quality
- Design

EN 61439-3

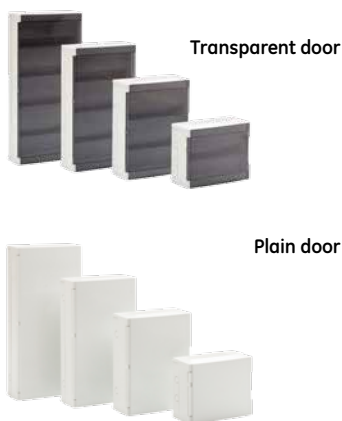


(1) FOR 4-row includes 2 screwless earth-rails.
Halogens are not intentionally added and are not expected to be present.



Fix-o-Rail 150

Distribution board RAL9010



# of rows	# of modules	Dimensions HxWxD (mm)	In	Ref. No.	Pack.
Transparent door					
1	18	270x355x150	80A	610636	1
2	36	450x355x150	80A	610637	1
3	54	600x355x150	100A	610638	1
4	72	750x355x150	100A	610639	1
Plain door					
1	18	270x355x150	80A	610646	1
2	36	450x355x150	80A	610647	1
3	54	600x355x150	100A	610648	1
4	72	750x355x150	100A	610649	1

Clamping section screwless earth-rail 6x16mm² and 21x4mm²

Fix-o-Rail 150

Accessories



Description	Ref. No.	Pack.
Terminals		
63A - Connection range 4 x (10 x 16mm ²), Cu section 6,5 x 9mm	610022	18
160A - Connection range 4 x (1 x 10 to 50mm ² incoming + 3 x 6 to 35mm ² + 8 x 2,5 to 16mm ² outgoing), Cu section 12 x 10mm 20kA (10 ms) Icw: 6,2kA (1 s)	617992	1/5
160A - Connection range 4 x (10 x 10mm ²), Cu section 12 x 5mm	610020	16



Protective shroud

For 160A terminal (ref. 610020)

Ref. No. Pack.

610021 1



Support with screwless earth-bar

Connection: 6x16mm² and 21x4mm² (Included with all distribution boards)

610396 1



Support with earth or neutral terminals

Cable section: 14x16mm²

610386 4

Cable section: 18x16mm²

610385 4



Support with terminal bars

Cable section: 2 (17x16mm²)

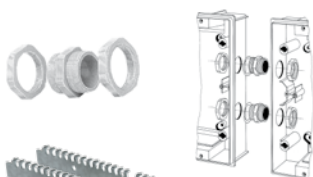
610532 4



Support with terminal bars L1-L2-L3-N

Cable section: 4 (5x16mm²)

610387 4

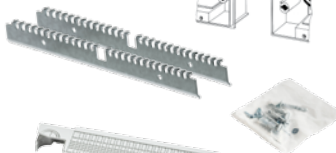


Coupling set (2 pcs)

Allows to couple two Fix-o-Rail 150 enclosures horizontally

1 set is needed to couple two enclosures.

600509 1



Cable relief (2 pcs) with 4 fixation screws

610630 1

Set: 4 quarter-turn screws for cover-plate, 7 isolation caps, 4 screws for cable entry-plate, 4 screws for screwless earth-rail

610628 1



Cable-entry plate (2 pcs) with 4 fixation screws

610635 1



Lock

Security lock with 2 keys

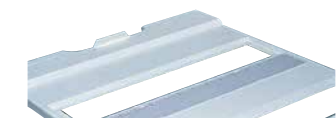
610170 1



Blanking plate

Length: 72mm, cut-out height: 45mm, breaking sections per 9mm

610142 4



Labels and labelholders

Set of 50 pieces

610270 1



Adhesive pictograms

For clear and permanent identification of circuits. Set of 50 pieces

610380 1



Drawing pocket

To be positioned at the bottom or top backside of the cover-plate

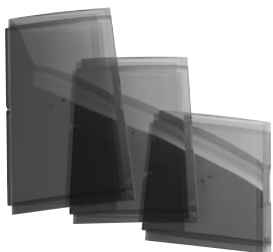
610265 1

Fix-o-Rail 150

Fix-o-Rail 150

Accessories (continued)

Distribution boards



Description	Ref. No.	V.E
Replacement door transparent		
For 1-row distribution board	610277	1
For 2-row distribution board	610287	1
For 3-row distribution board	610297	1
For 4-row distribution board	610305	1
Replacement door plain (RAL9010)		
For 1-row distribution board	610654	1
For 2-row distribution board	610655	1
For 3-row distribution board	610656	1
For 4-row distribution board	610657	1



Discover all our product ranges in the individual catalogues and on our website: uk.geindustrial.com



GE offers a complete solution:

Aquaria



Aquaria (IP65) is the best choice for distribution boards in premises with a need for high protection degree like power plants, technical areas, small laboratories, etc..

Fix-o-Rail Junior



Surface mounted enclosure made out of high-grade thermoplastic. For adaptations or extensions of existing installation with devices that increase safety or reduce energy consumption.

Flex-o-Box



Wire, tube or cable can be inserted into the Flex-o-Box without the need of cut-outs. No cable ducts are needed because of the the component entries. The cover can be snapped on.

ElfaPlus



With ElfaPlus, GE has one of the most comprehensive ranges available to meet the needs of today's demanding housing, commercial and industrial markets.

RCCB



RCCBs are used to provide protection for people from the risk of electrocution and protection against the risk of an electrical fire.

Unibis*/Fixwell*



Unibis compact MCBs, are developed to reduce the size of the distribution board to the minimum. The Fixwell screwless MCBs are developed to reduce time of installation to the absolute minimum.

Comfort functions



Modular comfort devices are used for manual or electromechanical control of all kinds of electrical devices. Going from the control of heating equipment to lighting in staircases, halls etc.

Pulsar T+/DIM



Time Relays can be used for conditioning of incoming source to exact predictable output.

SurgeGuard



SurgeGuard provides protection of an electrical installation and all electrical and electronic devices connected to this installation against destructive surges.

Since Thomas Edison patented the world's first circuit breaker, Industrial Solutions has been transforming the future of electrification. We design electrical solutions at the crossroads of digital and industrial – smart, rugged and equipped to control electricity from the grid to its point of use. Every day, we partner with our customers to solve their toughest energy challenges and reimagine industry in a way that only the world's digital industrial company can.

Belgium

GE Industrial Belgium
Nieuwevaart 51
B-9000 Gent
Tel. +32 (0)9 265 21 11

Finland

GE Industrial Solutions
Kuortaneenkatu 2
FI-00510 Helsinki
Tel. +358 (0)10 394 3760

France

GE Industrial Solutions
204, Rue du Rond-Point du Pont de Sèvres
F-92100 Boulogne-Billancourt
Tel. +33 (0)800 912 816

Germany

GE Industrial Solutions
Robert-Bosch Str. 3
D-50354 Hürth-Efferen
Tel. +49 (0) 2233/ 9719-0

Hungary

GE Hungary Kft.
Váci ut 81-83.
H-1139 Budapest
Tel. +36 1 447 6050

Italy

GE Industrial Solutions
Centro Direzionale Colleoni
Via Paracelso 16
Palazzo Andromeda B1
I-20864 Agrate Brianza (MB)
Tel. +39 039 637 371

Netherlands

GE Industrial Solutions
Parallelweg 10
NL-7482 CA Haaksbergen
Tel. +31 (0)53 573 03 03

Poland

GE Power Controls
Ul. Towarowa 25A, Ip
00-869 Warszawa
Tel. +48 22 520 53 53

Rudawka 96

43-382 Bielsko-Biała
Tel. +48 33 828 62 33

Russia

GE Industrial Solutions
27/8, Electrozavodskaya street
Moscow, 107023
Tel. +7 495 937 11 11

South Africa

GE Industrial Solutions
Unit 4, 130 Gazelle Avenue
Corporate Park Midrand 1685
P.O. Box 76672 Wendywood 2144
Tel. +27 11 238 3000

Spain

GE POWER CONTROLS IBÉRICA, S.L.
Calle Miño 122 Naves E-F
Polígono Industrial Santa Margarita
08223 Terrassa (Barcelona)
Tel. +34 900 993 625

United Arab Emirates

GE Industrial Solutions
Injaz Building, 3rd Floor
Dubai Internet City
PO Box 11549, Dubai
Tel. +971 4 4546912

United Kingdom

GE Industrial Solutions
2 The Arena, Downshire Way
Bracknell, Berkshire
RG12 1PU
Tel. +44 (0)800 587 1239

