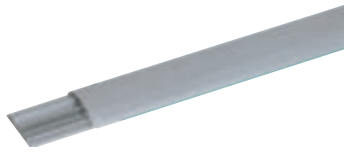
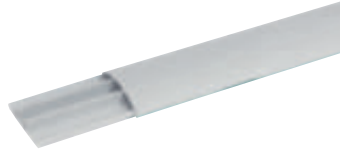


# Over floor trunking



0 300 92



0 300 93



0 328 00



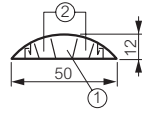
Conform to standard IEC 61084-2-2 and EN 50085-2-2

For creating a link between trunking, column, mini-column, floor units or protecting cables on passageways

Supplied with cover

## Over floor trunking 50 x 12 mm

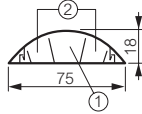
Pack	Cat.Nos	Over floor trunking 50 x 12 mm
54 <sup>1</sup>	0 300 92	<b>PVC trunking</b> Length 2 m, supplied with cover 3 compartments Capacity 1: max. Ø9 mm Capacity 2: max. Ø6 mm Grey RAL 7030



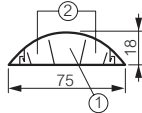
Pack	Cat.Nos	Accessories
10	0 300 12	Cover joint
10	0 300 11	Flat angle

## Over floor trunking 75 x 18 mm

Pack	Cat.Nos	Over floor trunking 75 x 18 mm
36 <sup>1</sup>	<b>N</b> 0 300 88	<b>PVC trunking</b> Length 2 m, supplied with cover 3 compartments Capacity 1: max. Ø14 mm Capacity 2: max. Ø11 mm White RAL 9003
36 <sup>1</sup>	0 300 90	Black RAL 9017
36 <sup>1</sup>	0 300 93	Grey RAL 7030



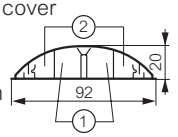
Pack	Cat.Nos	Over floor trunking 75 x 18 mm
20	0 300 91	<b>Aluminium trunking</b> Length 2 m, supplied with cover 3 compartments Capacity 1: max. Ø14 mm Capacity 2: max. Ø11 mm Grey RAL 7030



Pack	Cat.Nos	Accessories
10	0 300 19	Cover joint
5	0 300 18	Flat angle

## Over floor trunking 92 x 20 mm

Pack	Cat.Nos	Over floor trunking 92 x 20 mm
18 <sup>1</sup>	0 328 00	<b>PVC trunking</b> Length 2 m, supplied with cover 4 compartments Equipped with 2 adhesive strips for better floor fixing Capacity 1: max. Ø14.5 mm Capacity 2: max. Ø9.5 mm RAL 7016



Pack	Cat.Nos	Accessories
10	0 328 07	End cap
10	0 328 03	Cover joint
5	0 328 02	Flat angle
1	0 328 05	Junction to floor duct

## Junction between floor duct and trunkings

5	0 107 71 + 0 106 90	To be used with Cat.No 0 328 00
5	0 107 72 + 0 106 90	For cover 65 mm
		For cover 85 mm



1: Number of metres in pack