

# Wi-Fi Digital Time Switches

## Ex9DTSW



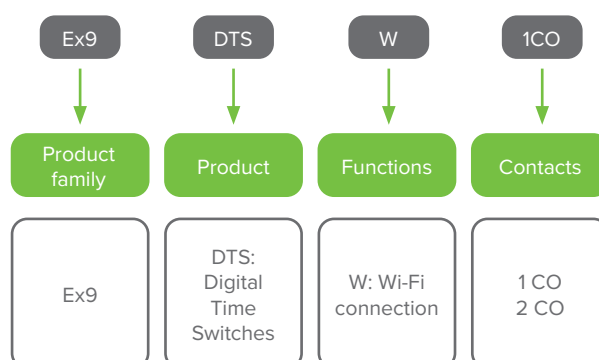
- Wi-Fi Digital Time Switches
- Rated operational voltage 24 - 240 V AC/DC
- Daily, weekly, yearly and astronomical switching programs
- Simple setting after the first start-up
- Possibility of permanent connection to the local network
- Time synchronization through NTP server
- Standard (2MU) width versions
- Replaceable battery to back up the set time
- The astronomical program has a selection of more than 500 preset cities

Installation digital time switch with Wi-Fi connection is designed for precise time control in various residential, commercial, and industrial applications. These multifunctional switches offer daily, weekly, yearly, and astronomical programs.

They feature a user-friendly interface, including a backlit LCD display, and can be controlled and programmed via a built-in web server using a Wi-Fi connection. The Ex9DTSW also supports time synchronization through an NTP server, ensuring accurate timekeeping.

With options for one or two channels, pulse/cycle output mode, and advanced features like astro program integration (which includes a selection of over 500 preset cities), the Ex9DTSW series allows for highly customizable and energy-efficient operation. The device also includes a battery backup to maintain time settings during power outages and supports automatic summer / winter time transitions.

### Type Key



### Certification marks



# Wi-Fi Digital Time Switches **Ex9DTSW**

## Wi-Fi Digital Time Switches

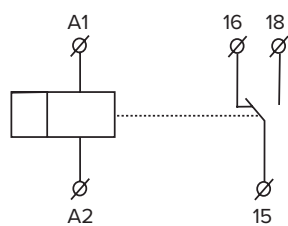
- Setting via Wi-Fi connection ( 2.4 GHz )
- Daily, weekly, yearly and astro switching programs
- Universal supply voltage AC/DC 24 – 240 V (AC 50-60 Hz)
- LCD display with white backlight
- Width 2MU



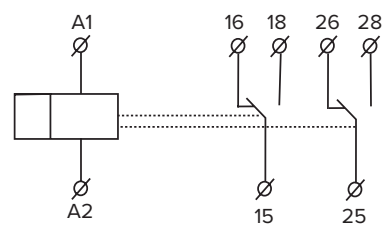
Channels	Contacts	Article No.	Type	Packing
1	1CO	115640	Ex9DTSW 1CO	1
2	2CO	115641	Ex9DTSW 2CO	1

### Wiring diagrams

Ex9DTSW 1CO



Ex9DTSW 2CO



# Technical Data **Ex9DTSW**

## Wi-Fi Digital Time Switches

### General parameters

ASTRONomical program: manual entry of coordinates or selecting from one of more than 500 preset cities
PIN code protection against unauthorized changes
Built-in web server for setup and control via Wi-Fi connection with permanent connection to local network
Daily, weekly, yearly, astro switching programs
Automatic summer / wintertime change - AUTO or OFF
Time synchronization through NTP server
Simple setting after the first start-up
Sealable transparent front panel cover.

### Electrical parameters

	Ex9DTSW 1CO	Ex9DTSW 2CO
Tested according to	EN 61812-1	
Rated operating voltage $U_e$	24 — 240 V AC/DC	
Operating voltage tolerance $U_e$	16 — 264 V AC/DC	
Rated frequency $f$	50 / 60 Hz	
Rated current $I_e$ (AC-1, $\cos \phi$ 1)	16 A	
Power consumption	Wi-Fi ON - 1 W / Wi-Fi OFF - 0,5 W	
Power dissipation	1.2 W	2.4 W
Channels	1	2
Switch contacts	1 CO	2 CO
Peak current	30 A / < 3 s	
Shortest switching time	1 s	
Settings via website	Wi-Fi ( 2.4 GHz )	
Breaking capacity	4000 VA / AC1, 384 W / DC	
Switching voltage	250 V AC1 / 24 V DC	
Electrical strength	4 kV	
Electrical service life	100 000 operation cycles	
Real time back-up	up to half a year with 60 outages (CR 2032 - 3V)	
Accuracy	$\pm 0.5$ s / day	
Auto summer / wintertime change	yes	
Displayed data	LCD display with white backlight	
Power reserve	10 years	
Memory locations	200 - time programs, 30 - holidays	
Output mode	pulse / cycle	
Programs	daily, weekly, yearly, astro	
Overvoltage category	III	
Polution degree	2	

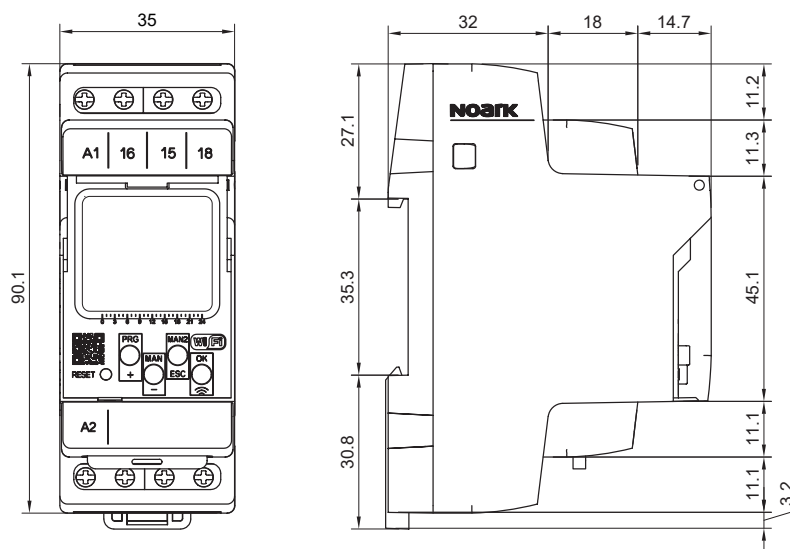
# Technical Data **Ex9DTSW**

## Wi-Fi Digital Time Switches

### Mechanical parameters

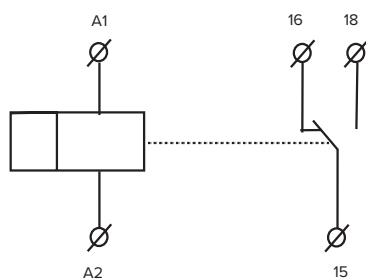
	Ex9DTSW 1CO	Ex9DTSW 2CO
Device width	35 mm	
Device height	90 mm	
Device depth	64 mm	
Frame size	45 mm	
Mounting	easy fastening onto 35 mm device rail (DIN)	
Mechanical service life	30 000 000 operation cycles	
Degree of protection	IP40 front panel / IP20 terminals	
Terminals	screw terminals	
Terminal capacity	1 x 2.5 mm <sup>2</sup> / 2 x 1.4 mm <sup>2</sup>	
Fastening torque of terminals	1 Nm	
Ambient temperature	-20°C — +55°C	
Mounting position	any	
Installation class	II	
Weight (1CO / 2CO)	0.122 kg / 0.135 kg	

### Dimensions

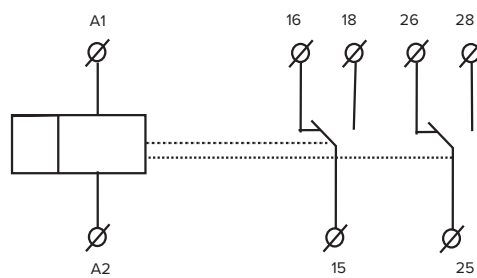


### Wiring diagrams

Ex9DTSW 1CO



Ex9DTSW 2CO

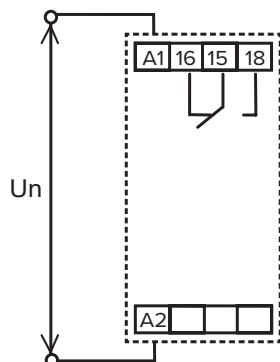


# Technical Data **Ex9DTSW**

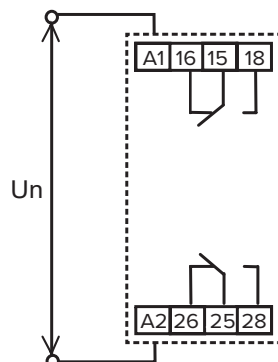
## Wi-Fi Digital Time Switches

### Connections

Ex9DTSW 1CO 230V



Ex9DTSW 2CO 230V



### Description

