

Quick start
guide

SDM630-WiFi

Three-Phase DIN rail meter



How to install the 3-phase Wi-Fi kWh Meter.

Step by step guide on how to install the Eastron SDM630 Wi-Fi kWh Meter.

Eastron®



Warning: Only install this device if you are familiar with electrical installations and the dangers they can impose. Disregarding the safety precautions can cause serious injuries.

Connection Diagram (Fused)



Installation

Step 1: Turn off power

Before beginning the installation ensure that the incoming power is disabled and verify there is no power with tools intended for this purpose.

Step 2: Mount the kWh Meter

Determine the breaker. Place the kWh Meter on the DIN-rail. Do not forget to click the kWh Meter in place using the black tab on the bottom.

Step 3: Live wires of the source to monitor

Attach the live wires (brown/black/grey) of the source to terminal 5/6/7 on the bottom of the kWh Meter.

Step 4: Neutral wire of the source to monitor

Attach the blue neutral wire of the source to terminal 8 at the bottom right of the kWh Meter.

Step 5: Neutral wire between the breaker and kWh Meter

Use an additional wire to connect the neutral terminal on the breaker with terminal 4 (top right) on the kWh Meter.

Step 6: Live wires between the breaker and kWh Meter

Use additional wires to connect the live terminals on the breaker with terminals 1/2/3 on the kWh Meter.

Step 7: Check connections

Make sure all screws are tightened (2.5 - 3Nm).

Step 8: Turn on power

The screen on the kWh Meter will now turn on. Installation complete!

Pairing mode

Press the wifi icon button on the kWh meter until the display shows 'AP' blinking. The kWh meter is now in pairing mode. If the AP mode stops blinking, retry.



Download the EasyLink App on Apple and Play Store



Open the EasyLink Application and Login to your account or register if this is the first time connecting an Eastron Meter to the EasyLink Application.



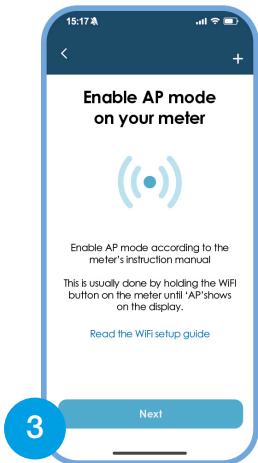
1

Press **Add New Device** to add a device to the EasyLink Dashboard
Select **SDM230-WiFi**



2

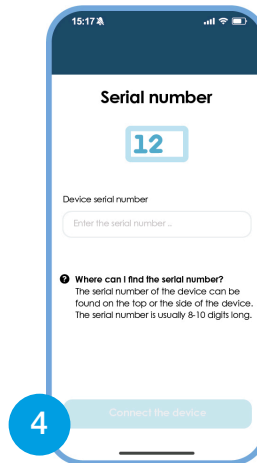
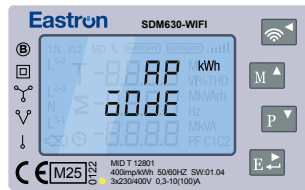
Ensure the Meter is wired correctly and powered on



3

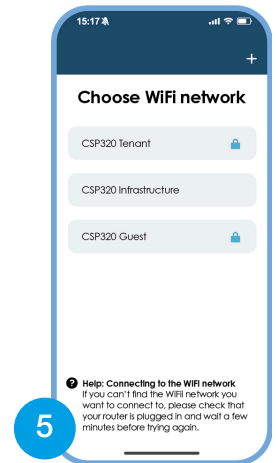
Enable AP Mode on the Meter

Press and hold the WiFi button if a password is requested, enter 1000, press and hold the button to enter **AP Mode**.



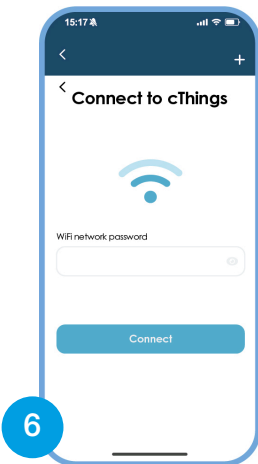
4

Enter the Serial Number of the Meter to Pair the Meter with the App.



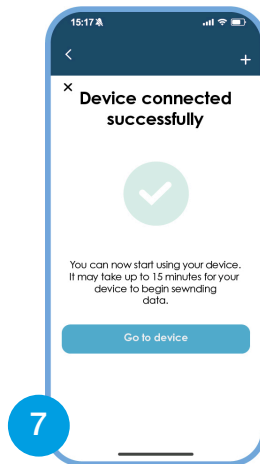
5

Select the WiFi Network the meter will connect to.



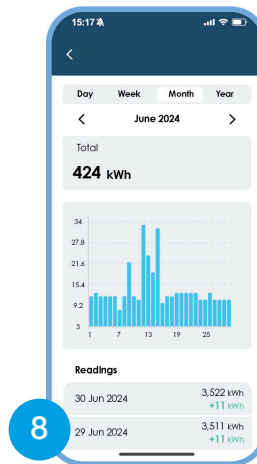
6

Enter the Password of the WiFi Network.



7

The Device is now connected and will start output Energy Readings to the Dashboard.



8

EasyLink Dashboard Examples.

Misrepresentation Act –
The details provided in this document are believed to be accurate but cannot be guaranteed. All liability, whether in negligence or otherwise, for any loss arising from the use of these details is hereby excluded.

©2025 Copyright Eastron

Address: **NO 52, Dongjin Road, Nanhu, Jiaxing, Zhejiang, China**

Tel: **+86-573-83698881**

Email: **sales@eastrongroup.com**

Fax: **+86-573-83698883**

www.eastrongroup.com

