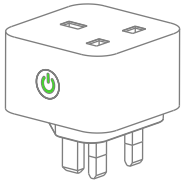


Wi-Fi SMART SOCKET

OP-WFP INSTRUCTIONS



Product configuration

Congratulations on purchasing the OPTIMUM OP-WFP Wi-Fi Smart Socket. Now you can turn your power on and off manually or according to your schedule through the Smart Life - Smart Living app installed on your device from anywhere where you have an Internet or data connection.

The app also allows you to monitor your Power consumption in real time for model OP-WFP Good for you and good for the environment.

Specifications

Maximum current	13A
Input voltage	AC (220~240)V
Max.Load power	2990 W
Wireless Type	Wi-Fi 2.4 GHz
Controls	Manual on/off
Operating temperature	(-20 ~ +50)°C
Operating humidity	(0 ~ 95) % RH, non-condensing

1

Configuration Preparation

- Download the smart phone application by scanning the QR Code or searching for **Smart Life - Smart Living** in the Apple App Store for iPhones, or Google Play for Android phones.

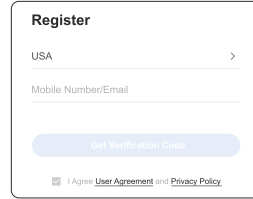


iOS / Android App

Smart Life - Smart Living

2

- Launch the app and log in. New users will need to register a new account.



- Plug the Wi-Fi Smart Socket into a mains outlet and turn on the outlet power switch. The LED should be green.

Where **Not** to Install Your Wi-Fi Smart Socket

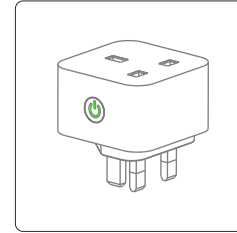
- Do **NOT** install the Wi-Fi Smart Socket in wet or damp areas such as bathrooms and laundries.



3

Configuration

Press the on/off button on the Wi-Fi smart socket. The LED will flash rapidly green.

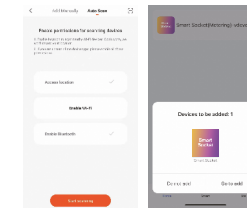


Note: If the LED does not flash, try resetting the device (see Reset on page 10).

4

Auto Scan:

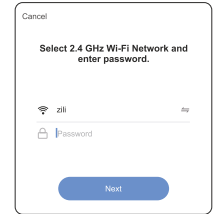
While the green LED is flashing, the Bluetooth connection will automatically find the device when you open Smart Life.



5

Enter password

Search for the Wi-Fi hotspot and enter the hotspot password.



Tap **Next**. Observe that the device is connecting to the application.

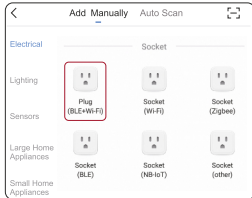
Add Manually:

- Tap Add Device or tap "+" on top right corner.

6

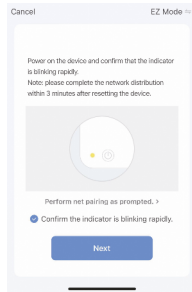


2. Select device type Socket (Wi-Fi).



7

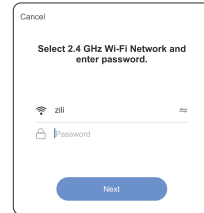
Set up the device



8

Enter Password

Search for the Wi-Fi hotspot and enter the hotspot password



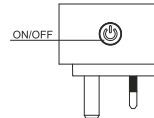
Tap **Next**. Observe that the device is connecting to the application.

9

Reset

If the Wi-Fi smart socket fails to respond to commands, it may need to be reset.

- Unplug the Wi-Fi smart socket from the mains outlet.
- Plug the device back into the mains outlet and turn on the outlet power switch.
- Press and hold the Manual Control Button until the LED indicator flashes quickly (between 5 s and 10 s).
- Follow the steps above in **Configuration** on page 4 to set up the device.



Change Device Name

- Tap **Device List** to see a list of connected devices.
- Tap **Modify Device Name** and enter a

10

new name for your Wi-Fi Smart Socket.

Note: If the Wi-Fi smart socket is going to be controlled by a Smart Speaker, choose an unambiguous, clear sounding name.

Share Devices

- In **Profile**, tap **Device Sharing**.
- Tap **Add**.
- Select the device to share.
- Enter the telephone number or email address of the person you want to share with.
- Tap **Confirm**.

Schedule

Schedules can be added to turn devices on or off at preset times and days of the week. The schedules can be once or repeated on certain days of the week.

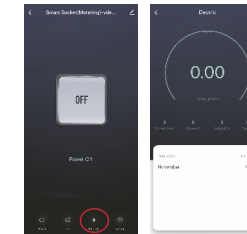
To activate a schedule:

- From the **Devices** screen, tap the **Smart Socket**, then select **Schedule**.
- Tap **Add Schedule**.
- Set up the desired **Schedule**.

11

Metering

Press Electric icon to set energy meter



12

- Tap **Info**.

- Tap **Check for Firmware Update**.

Remove Device

- To remove the device from the application list, tap **Info** (•••) at the upper right-hand corner of the application.
- Tap **Remove Device** to remove the device.

Care and Maintenance

Firmware Update

New features may be added to the firmware embedded in your Wi-Fi smart socket. To check for updates to firmware:

TOWER - TFC GROUP LLP
Tower House, Vale Rise, Tonbridge, Kent TN9 1TB

