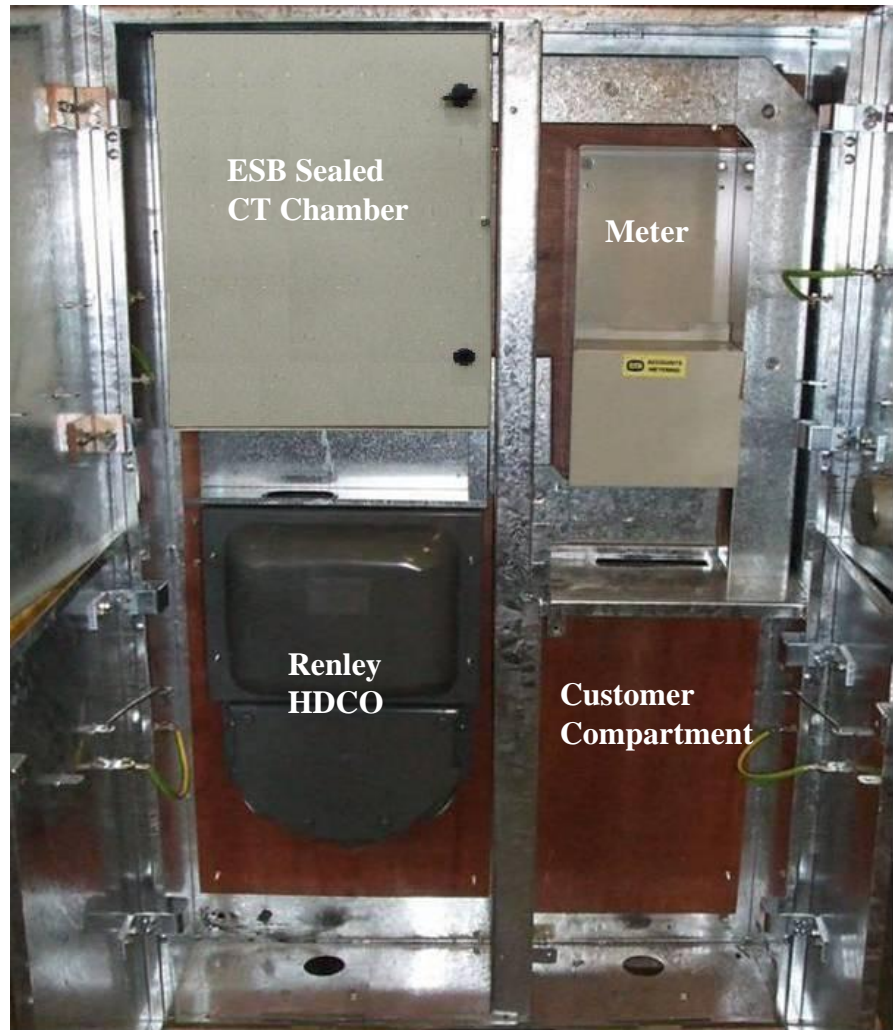


# Outdoor Metering Enclosure

The [Outdoor Metering Enclosure](#) was developed to comply with ESB National Code of Practice – Customer Interface

## [Key features include:](#)

- Keysafe provides high security
- IP 44 rated
- Designed for wall mounting or floor mounting
- The enclosure incorporates an ESB sealed CT Chamber
- All internal cables are secured and routed through segregated steel trunking
- Removable bottom plates for ease of installation for incoming & outgoing cables as per ESB Code of Practice
- Cabinet manufactured from 3mm hot dipped galvanised steel
- 18mm thick backboard for mounting the electrical equipment
- The enclosure includes segregated ESB Networks & Customer Sections



Interior of Outdoor Metering Enclosure



Keysafe

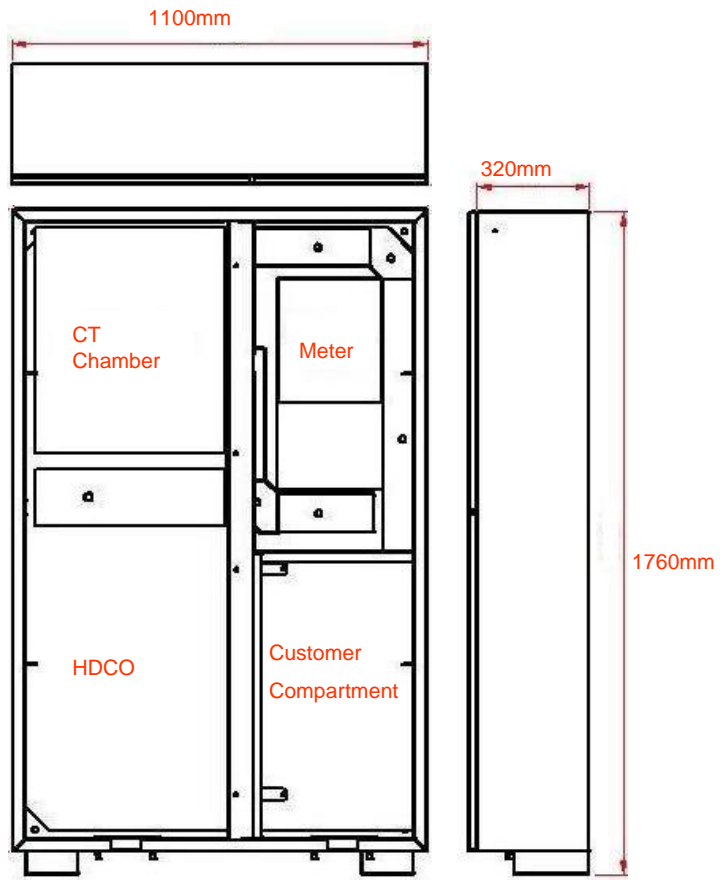
**Dimensions of the enclosure are:**

Height: 1760mm  
Depth: 320mm  
Width: 1100mm

Weight of Enclosure      Approx 150 kg



Outdoor Metering Enclosure installed in an industrial premises



**Design Features**

All internal cabling is fed through segregated steel trunking to provide protection to all the ESB Networks & Customer Cable Sections

**Construction**

The enclosure is protected to IP 44 rating

The doors are earthed to the main body of the enclosure.

The doors are also provided with door stays. The doors can be opened to the 180 degree position.

**Electrical Specification**

The enclosure can accept three phase supply up to 300 Amp. The CT Chamber houses the current transformers, which are installed by ESB Networks.

**Remote Access of Data**

The enclosure has been designed to allow for the installation of an aerial / modem for remote access to meter data