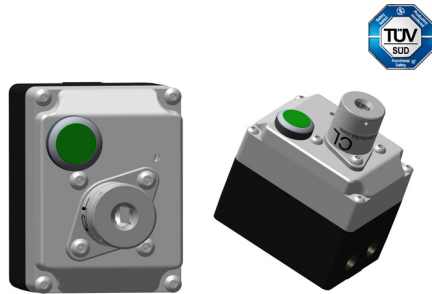




Power & Control Isolation

Mini Solenoid Controlled Key Switch in enclosure



The mini SSR unit is used where the key needs to remain trapped until an electrical signal has been received and where space is limited. When the signal is received the push button illuminates. On pressing the illuminated push button the key is released.

The solenoid release push button can be laser marked upon request with 2 lines of text containing no more than 8 characters per line.

Switch Approvals



Mini Solenoid Controlled Key Switch
<ul style="list-style-type: none"> • IP67 • Laser marking available on push button on request. • Suitable for machines with a rundown cycle. • The standard sequence is: Solenoid de-energised - Key trapped, Solenoid energised - Key free (other sequences available upon request). • 2 x NC 3A Key monitoring contacts. • 2 x NC 3A Solenoid monitoring contacts.

Technical Specification	
Enclosure	Painted die-cast zinc
Lock Mechanism	Die-cast zinc body with stainless steel
B10d	5,000,000
Solenoid Power Rating	12W (current at Nominal 24V DC = 500mA)
Solenoid Voltages	24V DC
Minimum Operating Current	5mA at 20v

Part No. / Ordering Information	
No. of Locks	Part No.
1	MSSR1
Lock Types	CL/ML
Solenoid Voltage	
24V DC	D024
* Key and lock types must be specified separately	

Dimensional Drawing - MSSR

