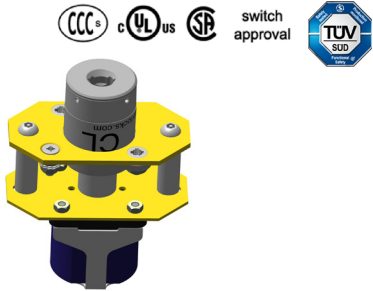


Power and Control Isolation » Key Switch (back of board) **S**
 Key Exchange
 Door Locks and Actuators



Key Switch (back of board)

The S unit is suitable for isolation or switching current and may be used to isolate power to machinery.

- Direct drive operation - positively opens contacts
- The standard sequence is: Key trapped - Power on, Key free - Power off (other sequences can be specified)
- Special switch ratings and/or contact arrangements available on request

Safety Data

Standards	EN60947-3:2009 ISO EN14119:2013 EN13849-1:2008 EN13849-2:2012 EN62061:2005	
Certifications	CE marked for all applicable directives	
Category	Cat. 4, PLe (EN/ISO 13849-1) and SIL3 (EN/IEC 62061)	
Functional safety data	B10d	5,000,000
	DC	High 99% (with correct monitoring)

mGard range

mGard is the ultimate range of robust mechanical trapped key products. Trapped key technology offers purely mechanical access locks (removing the need for expensive wiring). mGard offers an extensive variety of modular interlocking solutions. Suitable for use in applications up to SIL3 (EN/IEC 62061), Category 4 and PLe (EN/ISO 13849-1), mGard is ideal for use in harsh environments and is tested to 1,000,000 operations.

Technical Specification

Mounting Plate	Zinc Plated Mild Steel
Lock Mechanism	Die-cast zinc body with stainless steel operating mechanism (selected separately)
Key	Stainless steel (selected separately)
Minimum Operating Current	5mA at 20V

Article Codes

Mounting	Part N°
Back of Board	S
Lock Type	Key and lock types must be specified separately
Switch Current	Part N°
20A	A020
32A	A032
63A	A063
Switch Contacts	Part N°
4NO/0NC	40
2NO/2NC	22

Wiring Diagram - Key Free

20A, 32A, 63A				
4NO / 0NC	1 / 2	3 / 4	5 / 6	N / N
20A				
2NO / 2NC	1 / 2	3 / 4	5 / 6	7 / 8
32A, 63A				
2NO / 2NC	1 / 2	3 / 4	5 / 6	7 / 8

Dimensional Drawing

